

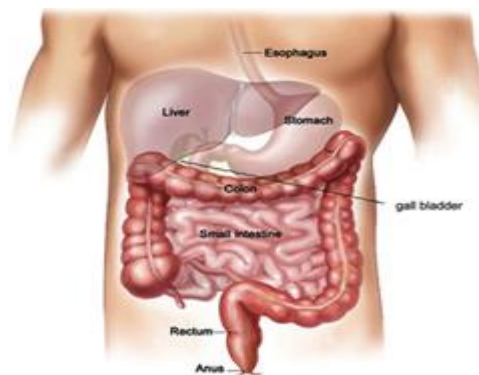
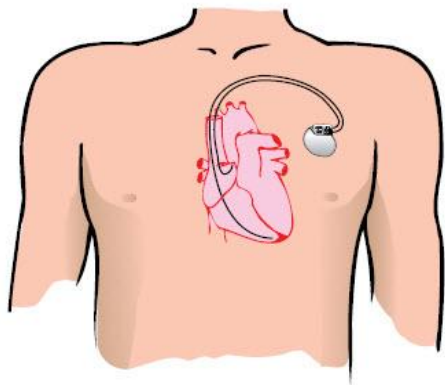
## OUT-PATIENT CAPSULE ENDOSCOPY SCHEDULING GUIDE FOR PATIENTS WITH IMPLANTED ELECTRICAL DEVICES



### ORDERING PHYSICIAN:

#### PROTOCOL FOR PATIENTS REQUIRING CARDIAC MONITORING.

1. Email Eric Tomakin to schedule the Capsule study: [etomaki1@jhmi.edu](mailto:etomaki1@jhmi.edu) or Fax Request to 410.583.2626.
2. Call or email Sondra Garlic: [garlicsr@jhmi.edu](mailto:garlicsr@jhmi.edu) , Nurse Manager, Clinical Holding Unit (CHU) and request a bed for extended monitoring.
3. If she says ok, call the shift coordinator and tell them what day you wish to admit the patient.
4. Call the Admitting Office: 410.955.5600, with the patient information. **BE SURE TO SAY THE PATIENT WILL COME TO THE CHU FOR EXTENDED MONITORING.** For hospital billing purposes, this is a different designation than simply being admitted to the hospital.
5. Email the GI Fellow scheduled to be on the GI inpatient service so they are aware and can write orders the day the patient comes to the CHU.
6. Contact your patient. Tell them to arrive to the Admitting Office by 10:15am. At 11:00am, the Admitting Office will bring your patient to the CHU. After the GI Fellow is contacted, the GI Fellow should page the endo nurse who will come to the CHU to administer the capsule.
7. 8 hours later, your patient will be discharged from the CHU. The CHU staff will store the monitoring equipment overnight. The endo nurse will return the next day to pick up the monitor from the CHU.



Other Contact Info:

Linda Lee MD: [llee12@jhmi.edu](mailto:llee12@jhmi.edu)  
Daniel Brotman MD: [brotman@jhmi.edu](mailto:brotman@jhmi.edu)  
Karen Bradley RN: [kbradle3@jhmi.edu](mailto:kbradle3@jhmi.edu)  
James Carder RN: [jcarder3@jhmi.edu](mailto:jcarder3@jhmi.edu)

Gerard Mullin MD: [gmullin1@jhmi.edu](mailto:gmullin1@jhmi.edu)  
Tiffany Boldin: [tboldin1@jhmi.edu](mailto:tboldin1@jhmi.edu)  
Mary Jo Longo RN: [mlongo@jhmi.edu](mailto:mlongo@jhmi.edu)  
Angela Palmer RN: [apalmer2@jhmi.edu](mailto:apalmer2@jhmi.edu)