



# SUBURBAN HOSPITAL

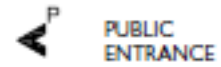
JOHNS HOPKINS MEDICINE

## LOWER LEVEL



1. AUDITORIUM / CONFERENCE ROOM 8
2. SECURITY
3. PURCHASING / DISTRIBUTION
4. HOUSEKEEPING / LAUNDRY
5. STERILE PROCESSING
6. CLINICAL ENGINEERING
7. LABORATORY / PATHOLOGY OFFICES
8. PRE-SURGICAL TESTING
9. MEDICAL RECORDS / FINANCE
10. COPIER / PRINTER MANAGEMENT
11. CARE COORDINATION

### LEGEND



PUBLIC ENTRANCE

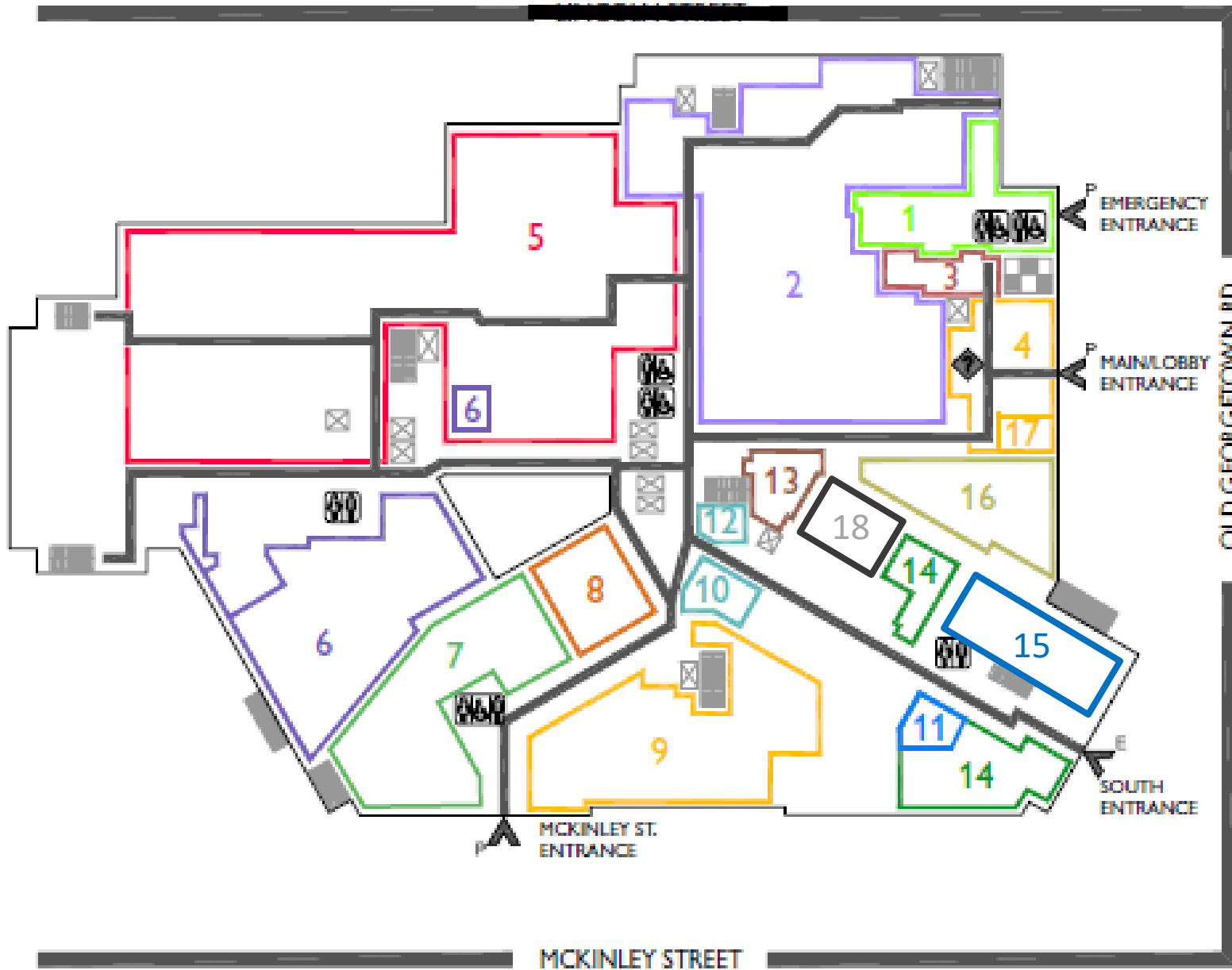


ELEVATOR



CORRIDOR

# LEVEL 1



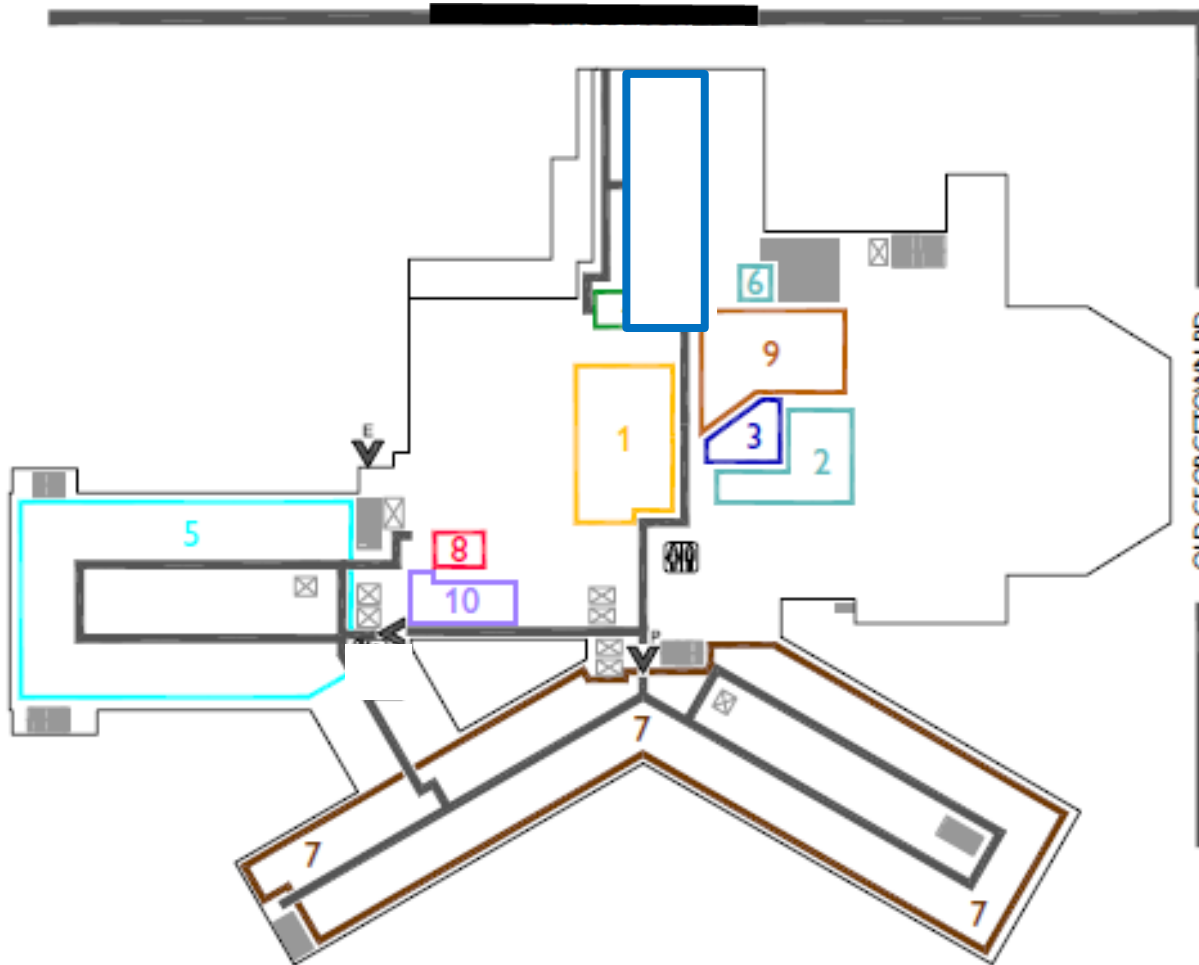
1. E.D. ADMITTING / WAITING
2. EMERGENCY / TRAUMA
3. REGISTRATION
4. FRONT DESK / LOBBY / PARKING PAYMENT KIOSK
5. RADIOLOGY
6. LABORATORY
7. CARDIO THORACIC & VASCULAR DOCTOR'S OFFICES
8. NUCLEAR MEDICINE
9. CARDIAC REHABILITATION CENTER / ECHO / ECG
10. VOLUNTEER SERVICES
11. PHYSICIAN ALLIANCE
12. MEDITATION ROOM
13. GIFT SHOP
14. MEDICAL STAFF OFFICE
15. E.D. ADMINISTRATION
16. PEDIATRIC E.D.
17. COFFEE CART
18. SPECIALTY CARE UNIT



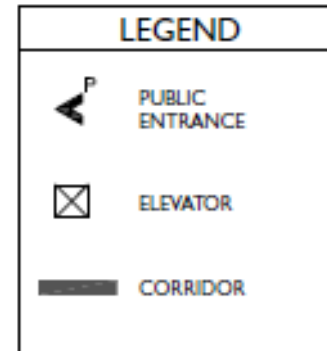
SUBURBAN HOSPITAL

JOHNS HOPKINS MEDICINE

LEVEL 2

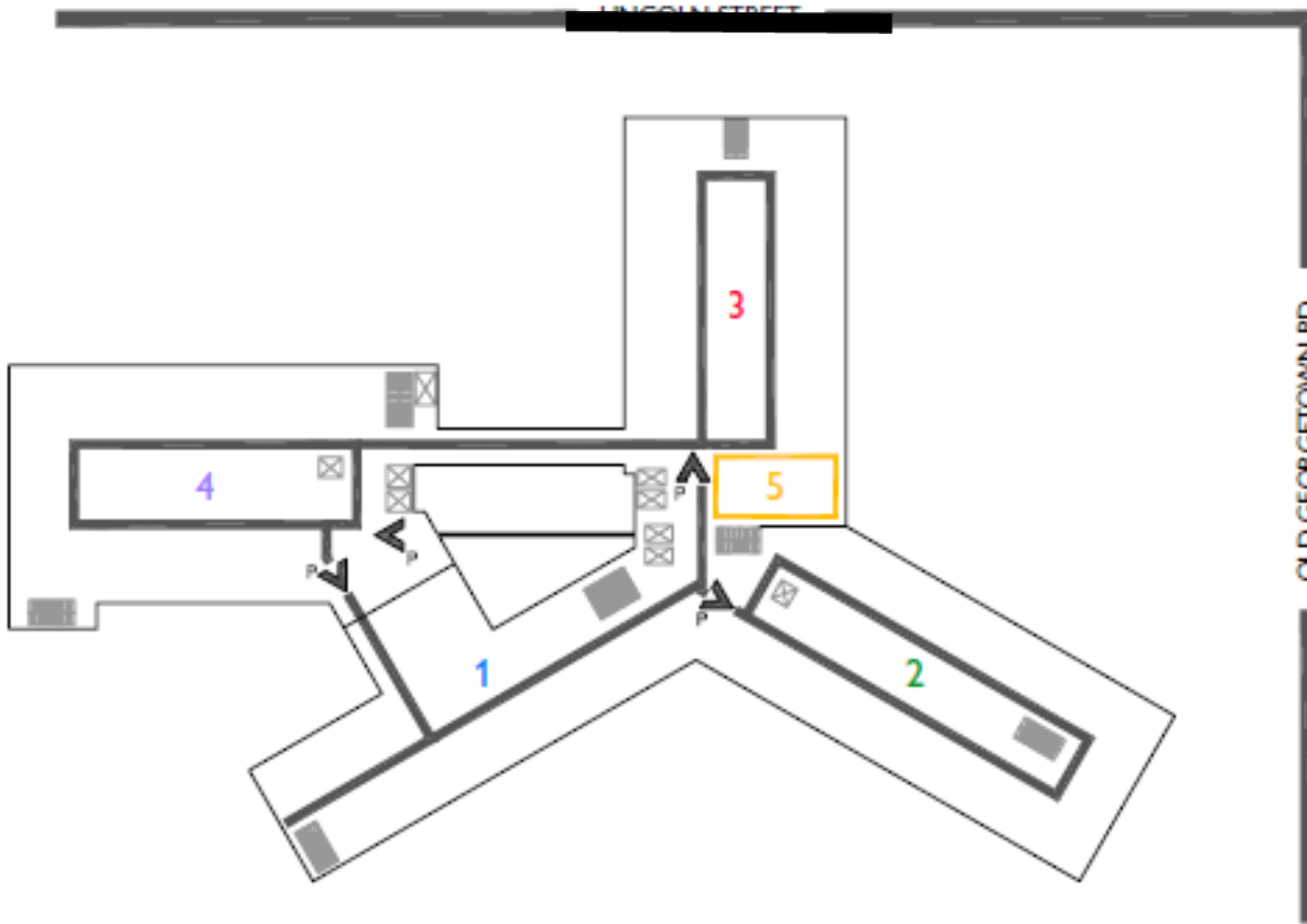


1. CAFETERIA
2. AREA UNDER CONSTRUCTION
3. AREA UNDER CONSTRUCTION
4. RECEIVING
5. 2400 NURSING
6. VACANT
7. 2100/2200 NURSING
8. DIETARY / FOOD SERVICES
9. DINING ROOM



UNIT - LEVEL

## LEVELS 3-7



1. (FLOOR VARIATIONS)  
3100 ICU NURSING (3<sup>RD</sup> FLOOR)  
EEG / OP BEHAVIORAL HEALTH / TRANSITION UNIT (4<sup>TH</sup> FLOOR)  
SURGICAL O.R. STAFF / PHYSICIAN LOUNGE (5<sup>TH</sup> FLOOR)
2. 3200 PCU (3<sup>RD</sup> FLOOR)  
EMPLOYEE HEALTH / RESEARCH / HUMAN RESOURCES (4<sup>TH</sup> FLOOR)  
PRE-OP AND RECOVERY (5<sup>TH</sup> FLOOR)
3. CARDIAC CATH LAB (3<sup>RD</sup> FLOOR)  
4300 NURSING (4<sup>TH</sup> FLOOR)  
SURGICAL O.R. (5<sup>TH</sup> FLOOR)  
6300 NURSING (6<sup>TH</sup> FLOOR)  
7300 BEHAVIORAL HEALTH (7<sup>TH</sup> FLOOR)
4. 3400 ICU (3<sup>RD</sup> FLOOR)  
4400 NURSING (4<sup>TH</sup> FLOOR)  
SURGICAL O.R. (5<sup>TH</sup> FLOOR)  
6400 NURSING (6<sup>TH</sup> FLOOR)  
PHARMACY (6<sup>TH</sup> FLOOR)
5. O.R. WAITING ROOM (5<sup>TH</sup> FLOOR)