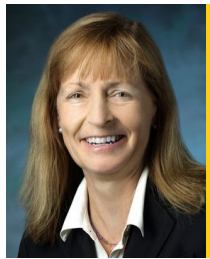


National Women's History Month

JOHNS HOPKINS SCHOOL OF MEDICINE WOMEN BASIC SCIENCE PROFESSORS

Johns Hopkins Medicine honors the institution's women professor-scientists this Women's History Month. The ground-breaking research and dedication of Johns Hopkins women professor-scientists are an indispensable contribution to science and healthcare around the globe. We are honored to have these incredible women as a part of the Johns Hopkins institution paving the way for gender equity and inclusion in medical and scientific research and advancement.



Deborah Jean Andrew, Ph.D.
Cell Biology



Amy Bastian, Ph.D.
Neuroscience



Kathleen Cullen, Ph.D.
Biomedical Engineering



Mary E. Fissell, Ph.D.
History of Medicine



Rachel Green, Ph.D.
Molecular Biology and Genetics



Miho Iijima, Ph.D.
Cell Biology



Anastasia Kralli, Ph.D.
Physiology



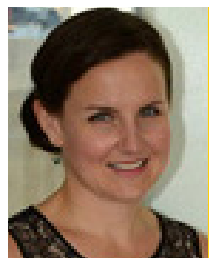
Svetlana Lutsenko, Ph.D.
Physiology



Erika L. Matunis, Ph.D.
Cell Biology



Susan Michaelis, Ph.D.
Cell Biology



Caren L. Freel Meyers, Ph.D.
Molecular Biology and Genetics



Rajini Rao, Ph.D.
Physiology

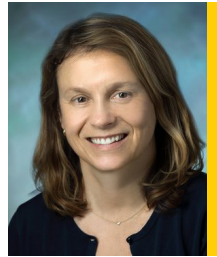
National Women's History Month

JOHNS HOPKINS SCHOOL OF MEDICINE WOMEN BASIC SCIENCE PROFESSORS

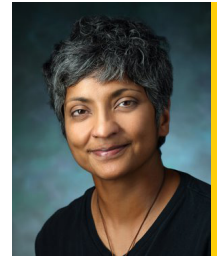
Johns Hopkins Medicine honors the institution's women professor-scientists this Women's History Month. The ground-breaking research and dedication of Johns Hopkins women professor-scientists are an indispensable contribution to science and healthcare around the globe. We are honored to have these incredible women as a part of the Johns Hopkins institution paving the way for gender equity and inclusion in medical and scientific research and advancement.



**Corinne Sandone,
M.A.**
*Art as Applied to
Medicine*



**Geraldine
Seydoux, Ph.D.**
*Molecular and
Comparative
Pathobiology*



**Shanthini
Sockanathan, D.
Phil.**
Neuroscience



**Katherine Lee
Wilson, Ph.D.**
Cell Biology



**Cynthia
Wolberger,
Ph.D.**
*Biophysics and
Biophysical
Chemistry*



Jie Xiao, Ph.D.
*Biophysics and
Biophysical Chemistry*