




Annual Report FY21

The Center for Nursing Inquiry
Johns Hopkins Health System

The background is a dark blue gradient. It features several abstract elements: a large, faint white hexagon on the left; a glowing blue lightning bolt in the top left; a glowing blue brain with a white gear inside it on the right; and a glowing blue lightning bolt in the bottom right. A white line connects the gear to the bottom right corner.

“In the fields of
observation chance only
favors the prepared
mind.”

Louis Pasteur

Our Vision

The Johns Hopkins Health System Center for Nursing Inquiry exemplifies nursing Evidence-based Practice, Quality Improvement, and Research.

Our Mission

The Center for Nursing Inquiry's mission is to increase the competence, confidence and capacity of Johns Hopkins Health System nurses to engage in meaningful inquiry work.





“One exciting part of inquiry work is being able to drive nursing professional practice”

Heather Watson, PhD, RN

About Us

The Center for Nursing Inquiry oversees the scholarly work of nurses in the Johns Hopkins Health System. Our goal is to build the capacity for nurses to participate in the three forms of inquiry: research, evidence-based practice (EBP), and quality improvement (QI). At the Center for Nursing Inquiry, we offer a variety of educational resources and expert guidance to help nurses engage in meaningful, high-quality scholarly work. We are dedicated to advancing the science of nursing.

Johns Hopkins Medicine values guide our Center

- Excellence and Discovery
- Leadership and Integrity
- Diversity and Inclusion
- Respect and Collegiality



Center for Nursing Inquiry Leadership

Heather Watson, Ph.D., MSN, RN

- Dr. Heather Watson is The Johns Hopkins Health System (JHHS) Nurse Scientist; leading and conducting discipline-specific and interprofessional research to strengthen the implementation, adoption, and sustainability of best evidence for clinical, administrative, and nursing practice.

Madeleine Whalen, MSN/MPH, RN, CEN

- Maddie Whalen is the Evidence-Based Project Program Coordinator for the Johns Hopkins Health System. In this role, she supports frontline nursing in completing robust and actionable EBP projects.

Alexandra Johnson, MSN, RN

- Alexandra Johnson is the Nursing Inquiry Program Coordinator for the Johns Hopkins Health System. In this role, she conducts and guides nursing research, evidence-based practice, and quality improvement work.

Nadine Rosenblum, MSN, RN IBCLC

- Nadine Rosenblum is the Nursing Inquiry Program Coordinator for the Johns Hopkins Health System. In this role, she conducts and guides nursing research, evidence-based practice, and quality improvement work.



Collaboration across JHHS

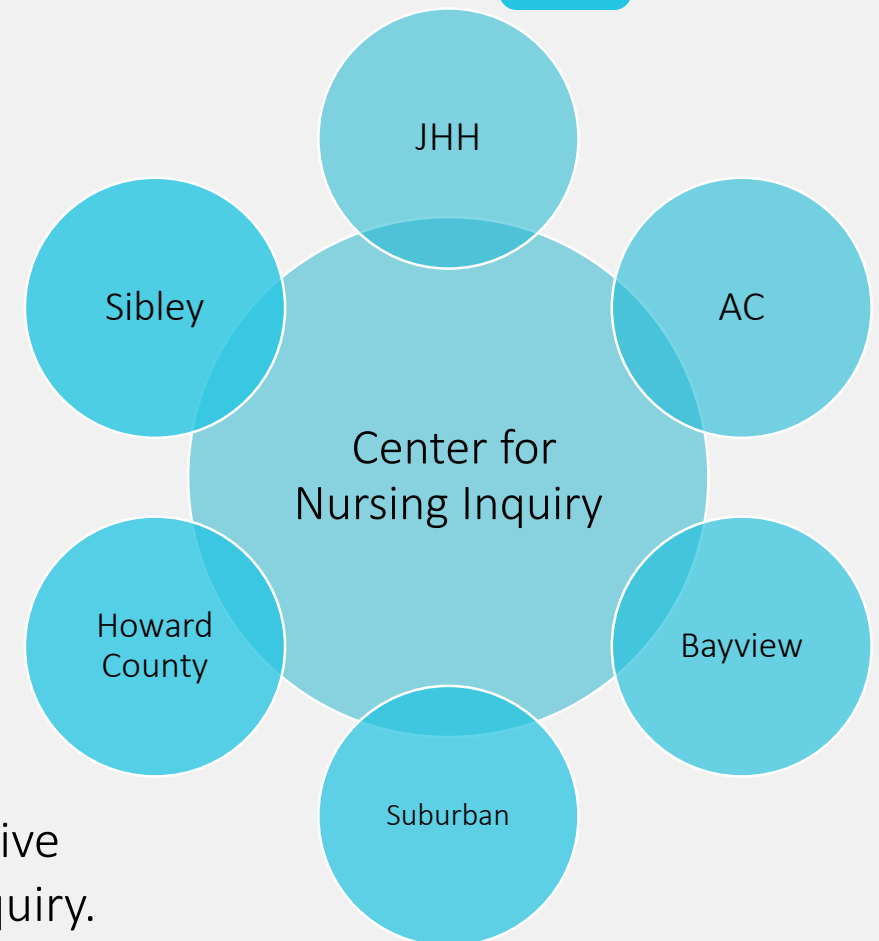
The JHHS CNI Council includes nurse representatives from each affiliate working toward integrating inquiry work, building capacity, and supporting Magnet designation.


Affiliate Representatives

- Johns Hopkins Hospital
 - Judy Ascenzi, DNP, RN
 - Kim Bissett, PhD, RN (IJHN)
- Bayview Medical Center
 - Cathy Lindauer, DNP, RN
- Howard County Hospital
 - Victoria Lowe, PhD(c), RN
 - Joy Lazo, MSN, RN
- Sibley Hospital
 - Suzanne Dutton, DNP, GNP
 - Rowena Milburn, DNP, RNC
- Suburban Hospital
 - Periwinkle Mackay, MSN, RN
- All Children's Hospital
 - Kristina Burger, DNP, RN
 - Joanne Christopher-Hines, DNP, APRN



TaJuanda Carter serves as the Administrative Coordinator for the Center for Nursing Inquiry.



The background features a collage of hexagonal shapes. Some are solid blue, while others are white with black outlines. Overlaid on these are various medical and technology icons: a heart with a pulse line, a hand holding a heart, a stethoscope, a person icon, and a smartphone with a pulse line. The overall theme is healthcare and learning.

“When there is inquiry, there is action and this action will promote learning.”

Lynn McDonald, DNP, RN

Nursing Inquiry

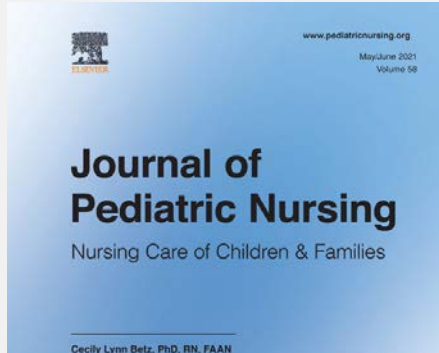
The CNI supports the three forms of inquiry from inception to completion.

	JHH	Bayview	Howard County	All Children's	Sibley	Suburban
Research	14	6	1	2	3	4
EBP	8	1	1	1	0	1
QI	22	0	3	0	1	3
Podium/Poster	18	11	0	3	3	0
Publications	12	4	0	5	1	0

The CNI recognizes this may not be a comprehensive list.

What Nursing Inquiry Looks Like “On Paper”

Nurses throughout the health system contributed to several studies and published on a variety of topics.



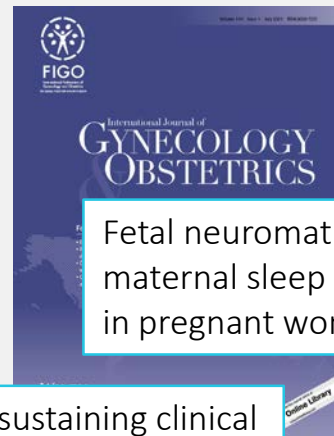
Examining the effects of music-based interventions on pain and anxiety in hospitalized children: An integrative review



Effects of a ‘Baby-Friendly Hospital Initiative’ on exclusive breastfeeding rates at a private hospital in Lebanon: an interrupted time series analysis



Changing the Culture of Pediatric Palliative Care at the Bedside



Fetal neuromaturation in late gestation is affected by maternal sleep disordered breathing and sleep disruption in pregnant women with obesity

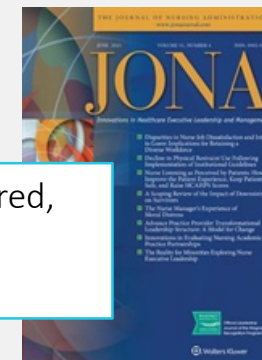
Evaluating the Outcomes of a Web-Based Stress Management Program for Nurses and Nursing Assistants




Approaches for establishing and sustaining clinical academic partnerships: A discursive review



Effect of a Nurse-Led, Patient-Centered, Gratitude Intervention on Patient Hospitalization Experience.





“Creating original nursing research studies not only improves nursing professionalism, but allows connection between nurses.”

Suzanne Dutton, DNP, GNP-BC, RN

Center for Nursing Inquiry Content

We utilize different avenues for content delivery to ensure we are meeting the needs of our audience.

• Workshops

We taught six workshops on the following subjects;

- *The Three Forms of Inquiry*
- *Publishing 201*
- *Resources for Inquiry Projects*
- *Data Management*
- *Dissemination*
- *Qualtrics*

• Journal Club

- We hosted a journal club four times to discuss different articles or feature a visiting nurse author.

• Podcasts

We recorded and released six podcasts featuring topics relevant to inquiry work.

- *How to Pick a Journal for Publication*
- *Root Cause Analysis*
- *Holding Focus Groups*
- *Getting Involved with Scholarly Projects*
- *Parts of a Paper*
- *Terminology Trouble*

• Blogs

We created eight blogs to help nurses on their inquiry journey.

- *The IRB*
- *Implementation Science*
- *What is an A3*
- *On the Road to Publication*
- *Fishbone Models*
- *Scientific Evidence*
- *One Nurse's Experience with EBP*
- *PDSA Cycle*

• Newsletter

- We released three newsletters covering topics of interest and highlighting contributions from nurses.

We hold monthly office hours to provide just in time inquiry project help, abstract development, or manuscript review.


Nurse Scholars Cohort II

Music for Pain Relief

The Johns Hopkins Nurse Scholars Cohort, is a year-long program aimed at building nursing expertise in inquiry work. The program provides nurses with the foundation needed to participate in research, evidence-based practice (EBP), and quality improvement work (QI). In addition to classroom content and hands-on training, Scholars will have the opportunity to interact with nurse leaders and inquiry experts.

In FY21 the second cohort conducted an EBP literature review to build upon an existing study looking at the feasibility of implementing music as a non-pharmacological pain relief measure. The cohort members completed the review and published their results in a peer reviewed journal. They also acted as integral members of the study team, contributing to IRB preparation, logistics, and education content production.



The background of the slide is a dark blue space-themed pattern. It features a dense network of thin, bright blue lines that crisscross the frame, creating a web-like or neural network effect. Scattered throughout this network are small, white and light blue dots, resembling stars or distant galaxies. The overall aesthetic is high-tech and futuristic.

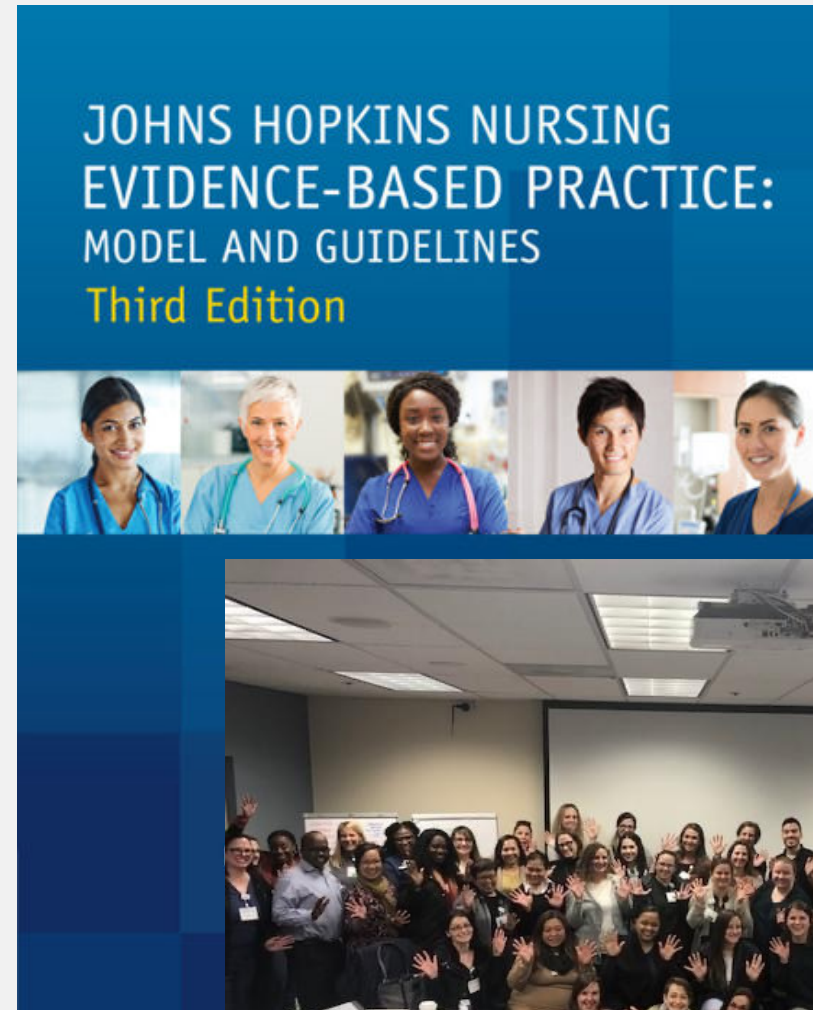
“The Cohort was an incredible experience that taught me skills I will carry with me for the entirety of my nursing career. It has also allowed me the opportunity to become more involved in my department and implement new projects that I otherwise would not have been able to participate in. I cannot say enough good things about the Scholars Program!”


Kelly Williams, RN

Evidence-based Practice Cohort

The EBP Cohort is part of the Center for Nursing Inquiry's mission to increase the capacity of Hopkins nurses to engage in robust inquiry projects. The program was made possible by a partnership with the Institute for Johns Hopkins Nursing and the CNI.

The cohort members conducted an EBP literature review pertaining to preceptor development in hospitals. Their findings informed ongoing health system work to redesign the orientation and preceptor model within Hopkins. Furthermore, the cohort is working toward publication of their results.





“The Evidence-Based Practice (EBP) Cohort experience has provided me with a strong foundation to guide future nursing inquiry. The content of the EBP curriculum was systematic and easy to apply, and the practice opportunities were instrumental in understanding each essential component of the EBP process. I felt truly supported by nursing leadership and EBP experts throughout the journey as they provided a multitude of resources to support continued EBP inquiry.”

Lisa Smith, MSN, RN

Nursing Scholars Program Goes Virtual...

Adapt, Adjust, Amend, but don't quit.

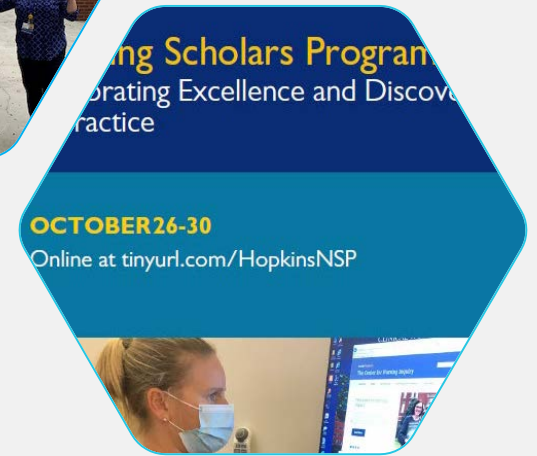
Due to the pandemic the CNI pivoted from an in-person event to an online platform, enabling us to open the program to the entire health system.

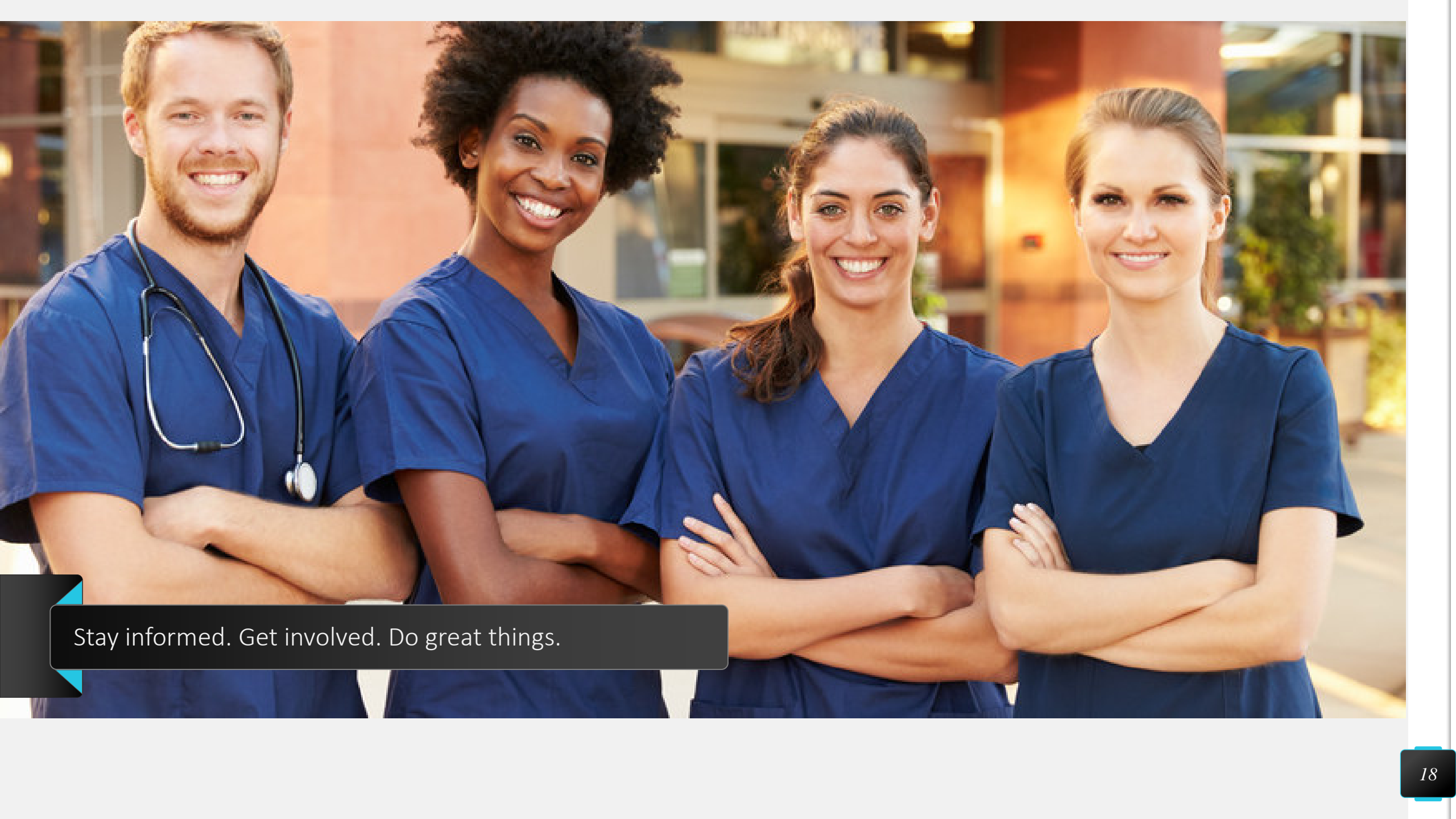
The Nursing Scholars Program is an annual celebration of nursing innovation, discovery and education. The event, held each fall, is open to all nursing staff members of any level or specialty, and provides the opportunity to learn from and share knowledge with your nursing peers across Johns Hopkins.

The Nursing Scholars Program features inspiring expert presenters, educational breakout sessions with subject matter experts and dozens of poster presentations showcasing nurse-led projects.

During the pandemic the Scholars Program hosted:

- ❖ 12 expert presenters
- ❖ 24 poster presentations
- ❖ 1075 nurses in attendance









Stay informed. Get involved. Do great things.



Thank You

-  The Center for Nursing Inquiry Team
-  410-955-1342
-  nursinginquiry@jhmi.edu
-  <https://intranet.insidehopkinsmedicine.org/center-for-nursing-inquiry/>