

Audiology Externship Experience

Johns Hopkins All Children's Hospital



JOHNS HOPKINS
All Children's Hospital



Overview



The key components of our clinical education mission are to expose the Doctor of Audiology (Au.D.) externs to the comprehensive, best-practice, diagnostic and rehabilitative pediatric audiology experience. We aim to enhance and expand the clinical and academic knowledge base provided by clinical preceptors.

Externship details

Johns Hopkins All Children's Externship is a pediatric experience. Audiologic services are provided to the pediatric population ranging from birth-21 years of age

Population includes a range of developmental ages and abilities. Case loads are often medically complex.

The externship is a 12-month clinical experience, which typically begins in May.

Opportunities are available at Main Campus/Hospital in St. Pete and Outpatient Rehabilitation Centers in the area including Tampa, Brandon, Lakeland, Pasco, Sarasota, Ft. Myers



Hospital Main/Campus



Outpatient Care Centers



Clinical experiences include:

**Comprehensive
Audiologic
Evaluation**

**Auditory Brainstem
Response Evaluation**

**Infant Hearing
Screening and
Assessment**

**Central Auditory
Processing Disorder
(APD) Evaluation
and Treatment**

**Cochlear Implant
Evaluation, Activation,
Mapping, Follow-up**

**Hearing Aid Evaluation,
Orientation, Follow-up**

**Bone Conduction
Device Evaluation,
Orientation, Follow-up**

**FM system
Evaluations and
Fittings**

Inpatient Services

**Craniofacial Cleft
Palate Clinic**

School services

Comprehensive audiologic evaluations

- Behavioral hearing evaluations using top-of-the-line diagnostic equipment including:
 - Behavioral, visual reinforcement, conditioned play, and conventional audiometry
 - Otoacoustic emission evaluation
 - Immittance measures



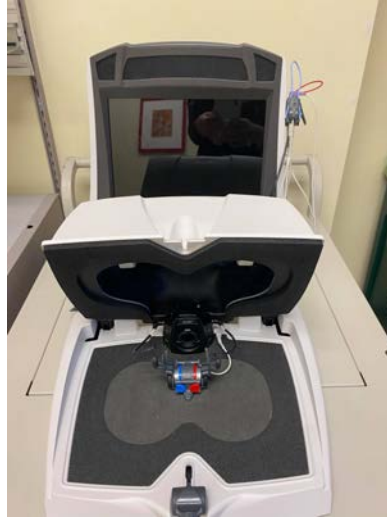
Auditory Brainstem Response Evaluations and Infant Hearing Screening and Assessment



Audiologic Treatment

Fitting and orientation of devices such as:

- Hearing aids
- Bone conduction devices
- Hearing assistive technology (i.e: FM systems)
- Cochlear implants



Cochlear Implant Program

- Evaluations
- Initial Activation
- Mapping



Watch Video Here of a first activation
“Sounds Like Love”: <https://youtu.be/8vshpkzfTxs>



Multidisciplinary team approach for management of children with Cleft lip and/or palate including:

Plastic and Reconstructive Surgery, Audiology, Nursing, Orthodontics, Otolaryngology, Parents, Pediatric Dentistry, Psychology and Social Work, Speech Language and Feeding, Team Pediatrician

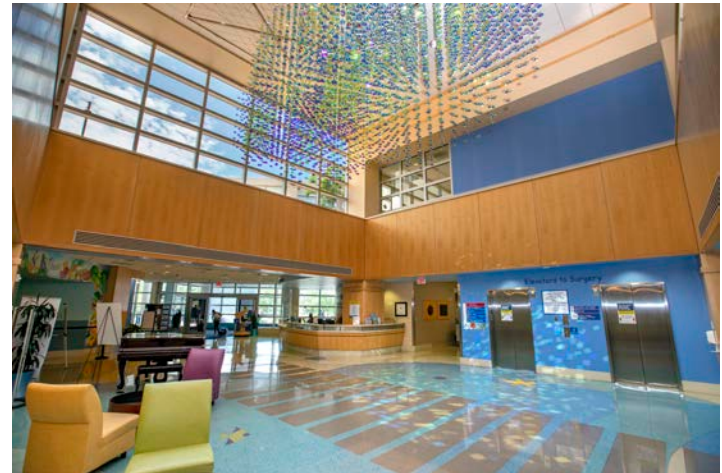


Inpatient Services

Auditory Brainstem
Response evaluation
under anesthesia in the
Special Procedures and
Operating Room

Bedside audiologic
evaluations

Neonatal intensive care
unit audiologic
evaluations



Application Process

- JHACH invites those enrolled in an accredited Audiology program and in good academic standing to apply for this opportunity.
- JHACH Audiology does not currently offer financial arrangements.
- Students are encouraged to submit a cover letter, resume, and letters of recommendation.
- Email application and any related inquiries to ACH-AudExternship@jhmi.edu.
- The application deadline is October 1st.
- The application will be reviewed and the student will be notified regarding a phone interview.
- After phone interview, the student will be notified if a formal in-person interview will be extended
- Final selection is based on a formal interview.

Apply to Johns Hopkins All Children's for a well-rounded audiology externship experience!





JOHNS HOPKINS

All Children's Hospital



all we do. all for kids.™