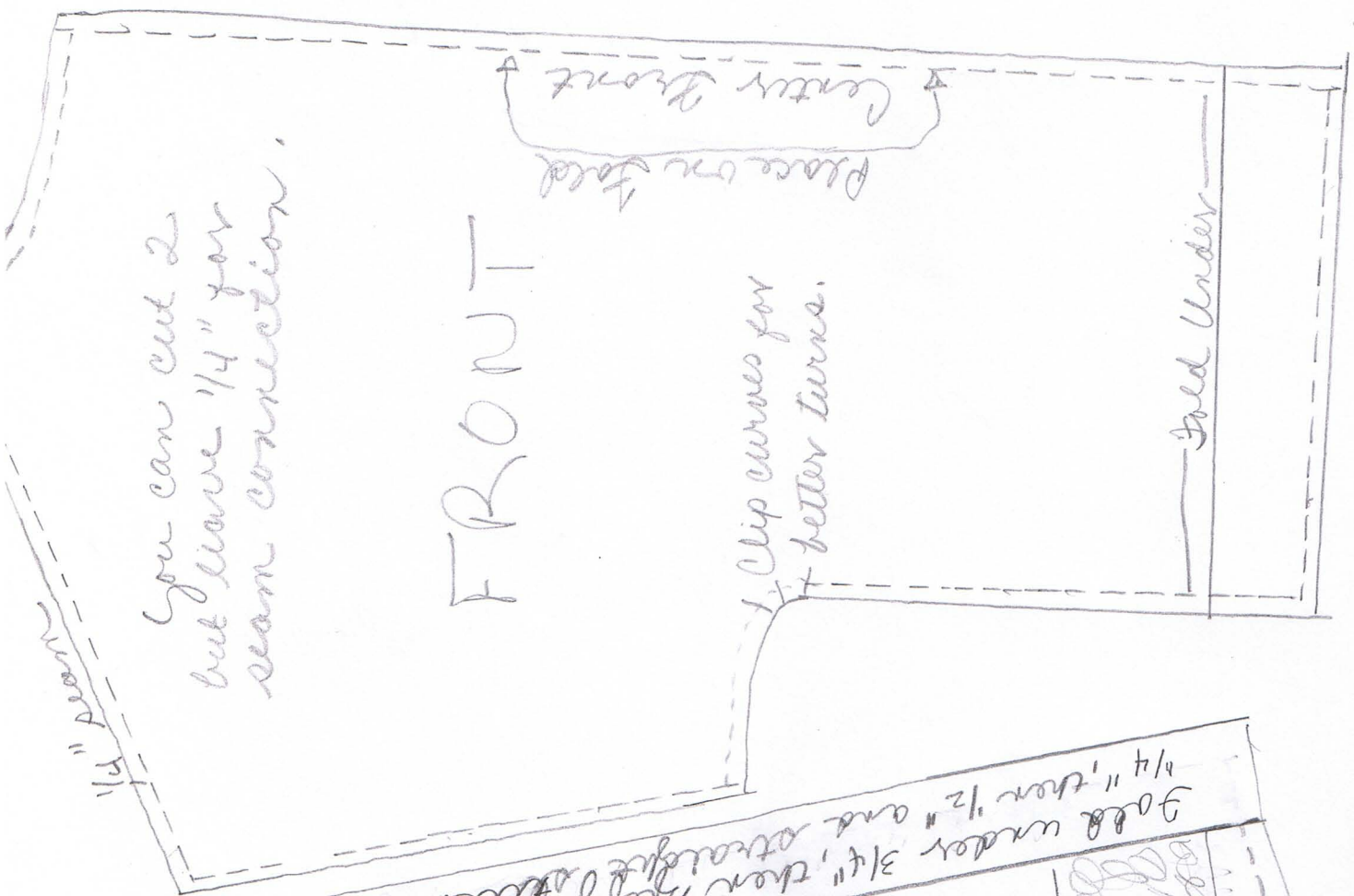


Pattern by Esther Dean, Skowhegan, ME 04974  
gator @ prokar.com



FRONT

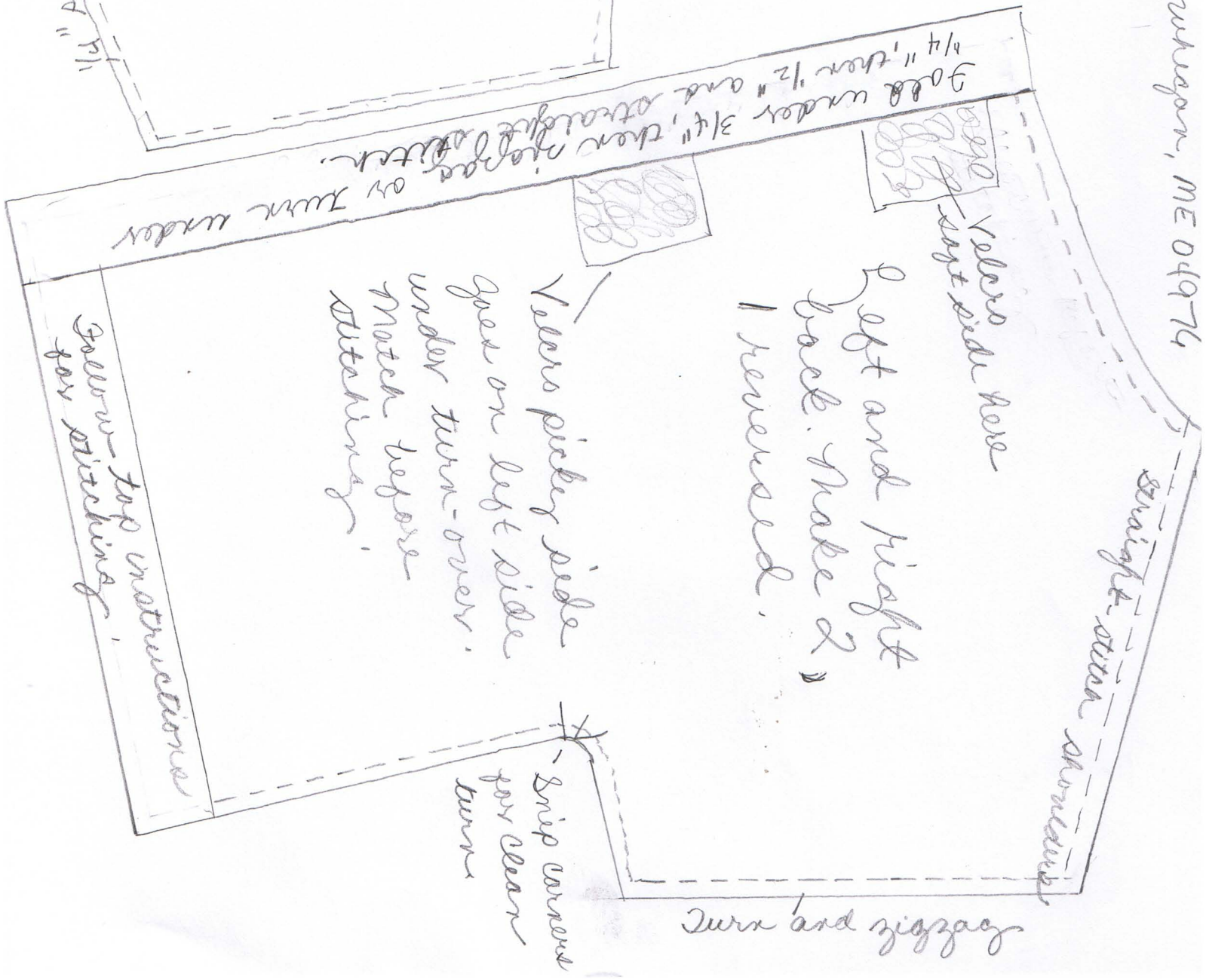
You can cut 2 but leave 1/4" for seam connection.

1/4" seam

Center Front

Fold Under

Clip corners for better turns.



Straight & even shoulder

Yellow under 3/4", then straight 1/2" or Turn under 1/4" then straight 1/2"

Yellow side hole

Left and right back. Make 2, 1 reversed.

Yellow picky side goes on left side under turn-over. Match before stitching.

Yellow - top instructions for stitching

Turn and zigzag

Snip corners for clean turn.