

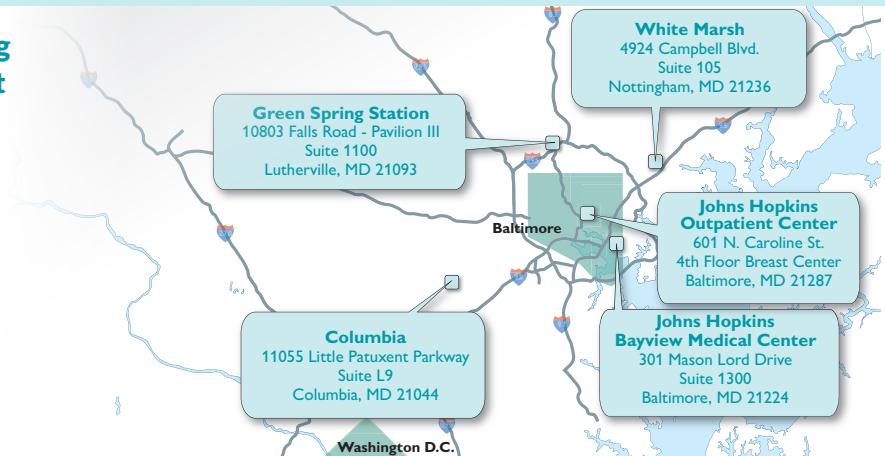
# Johns Hopkins Medical Imaging

## Breast Imaging Specialists

Baltimore Region

The Johns Hopkins Division of Breast Imaging provides comprehensive services throughout the Baltimore region:

- 3-D Mammography
- Breast Ultrasound
- Breast MRI
- Breast Biopsy
  - 3-D Stereotactic
  - Ultrasound-guided
  - MRI-guided



### Emily Ambinder, M.D.

Division Director of Breast Imaging

**Medical School:** Emory University School of Medicine

**Residency:** Johns Hopkins University School of Medicine

**Fellowship:** Johns Hopkins University



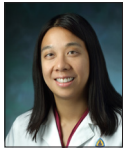
### Phil Di Carlo, M.D.

Assistant Professor

**Medical School:** SUNY at Stony Brook School

**Residency:** Stony Brook University Medical Center

**Fellowship:** Stony Brook University Medical Center



### Jessica Hung, M.D.

Clinical Associate

**Medical School:** Northwestern University Feinberg School of Medicine

**Residencies:** Harlem Hospital Center/Columbia University

The Ohio State University Wexner Medical Center

**Fellowship:** Henry Ford Hospital



### Kathleen Lucas, M.D.

Clinical Associate

**Medical School:** Virginia Commonwealth University

**Radiology Residency:** University of Maryland Medical Center

**Breast Imaging Fellowship:** Mercy Medical Center



### Lisa Mullen, M.D.

Breast Imaging Fellowship Director

**Medical School:** Columbia University College of Physicians and Surgeons

**Residency:** Columbia Presbyterian Medical Center

**Fellowship:** Johns Hopkins University



### Kelly Myers, M.D.

Associate Professor

**Medical School:** Icahn School of Medicine at Mount Sinai

**Residency:** Johns Hopkins University School of Medicine

**Fellowship:** Memorial Sloan-Kettering Cancer Center



### Eniola Oluyemi, M.D.

Associate Professor

**Medical School:** Northwestern University Feinberg School of Medicine

**Residency:** University of Wisconsin Hospital and Clinics

**Fellowship:** University of Washington Medical Center



### Babita Panigrahi, M.D.

Assistant Professor

**Medical School:** Yale School of Medicine

**Residency:** Johns Hopkins University School of Medicine

**Fellowship:** Massachusetts General Hospital



### Joanne Trapeni, D.O.

Clinical Associate

**Medical School:** University Of New England College of Osteopathic Medicine

**Residency:** Maine Medical Center

**Fellowship:** Maine Medical Center



### Sarah Zeb, M.D.

Clinical Associate

**Medical School:** Rawalpindi Medical College and West Virginia University School of Medicine

**Residency:** West Virginia University Hospitals

**Fellowships:** West Virginia University Hospitals, University of Maryland Medical Center

Patients can schedule mammograms online through the MyChart patient portal.

443-997-7237 | [hopkinsmedicine.org/imaging/mychart](https://hopkinsmedicine.org/imaging/mychart)

# JOHNS HOPKINS MEDICAL IMAGING – NATIONAL CAPITAL REGION

## Breast Imaging Specialists



Johns Hopkins Medical Imaging provides comprehensive breast imaging services in a dedicated women's imaging suite. All exams are conducted by technologists who work only in breast imaging and all images are reviewed by Johns Hopkins Division of Breast Imaging faculty members, listed below.



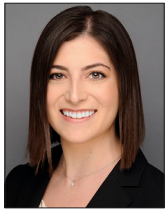
**Pouneh Razavi, M.D.**

*Director of Breast Imaging in the National Capital Region*

**Breast Imaging Fellowship:** Memorial Sloan-Kettering Cancer Center

**Radiology Residency:** Georgetown University Hospital

**Medical School:** Georgetown University School of Medicine



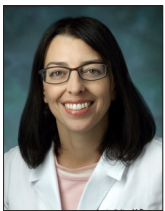
**Margaret Houser, M.D.**

*Clinical Associate*

**Breast Imaging Fellowship:** The George Washington University Medical Faculty Associates

**Radiology Residency:** The George Washington University School of Medicine and Health Sciences

**Medical School:** Florida International University



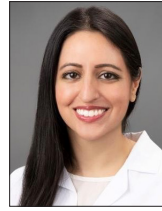
**Sandra Polin, M.D.**

*Clinical Associate*

**Breast Imaging Fellowship:** Memorial Sloan-Kettering Cancer Center

**Radiology Residency:** Mount Sinai Hospital

**Medical School:** Eastern Virginia Medical School



**Anam Salman, M.D.**

*Clinical Associate*

**Breast Imaging Fellowship:** George Washington University

**Radiology Residency:** George Washington University

**Medical School:** New York Medical College



**Jocelyn Scheinert, M.D.**

*Clinical Associate*

**Breast Imaging Fellowship:** New York-Presbyterian/Weill Cornell Medical Center

**Radiology Residency:** Albert Einstein College of Medicine/Diagnostic Radiology

**Medical School:** Tufts University School of Medicine



**Sara Shaylor, M.D.**

*Clinical Associate*

**Breast Imaging Fellowship:** Memorial Sloan-Kettering Cancer Center

**Radiology Residency:** Hospital of the University of Pennsylvania

**Medical School:** Virginia Commonwealth University

**Services:**

- 3D Mammography (breast tomosynthesis)
- Breast Ultrasound
- Breast MRI
- Fast MRI (only at JHMI Bethesda)
- Minimally invasive image-guided breast biopsy
- 3-D Stereotactic
- Ultrasound-guided
- MRI-guided

**Johns Hopkins Medical Imaging**  
6420 Rockledge Drive  
Suite 3100  
Bethesda, MD 20817  
443-997-7237

**Sibley Memorial Hospital**  
5255 Loughboro Road NW  
Washington DC 20016  
202-537-4545

Patients can schedule mammograms online through the MyChart patient portal.  
**443-997-7237 | [hopkinsmedicine.org/imaging/mychart](http://hopkinsmedicine.org/imaging/mychart)**