

National Women's History Month

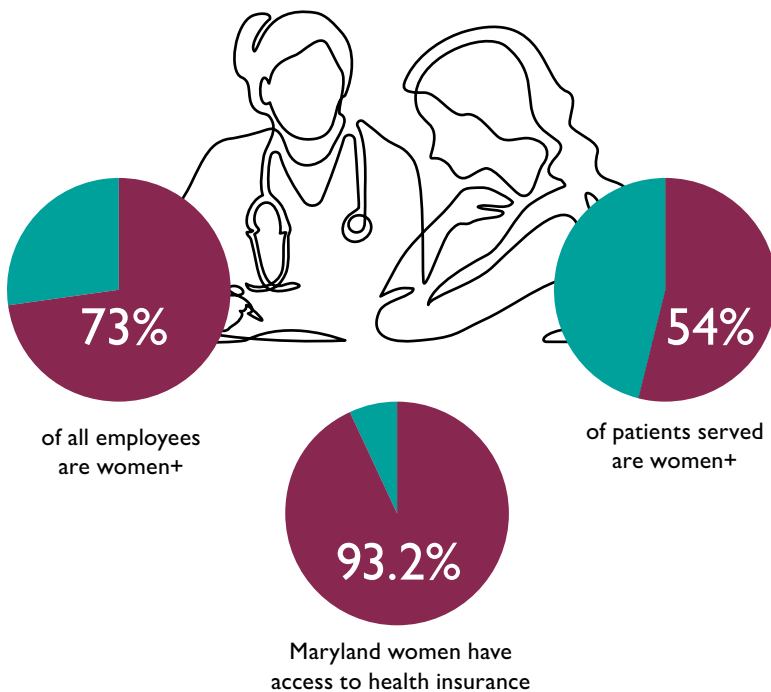
History

The first National Woman's Day was observed on Feb. 28, 1909, in New York as a way to recognize women's rights and labor. In 1981, then Maryland congresswoman (later senator, and now Johns Hopkins professor) Barbara Mikulski and Sen. Orrin Hatch cosponsored the first joint congressional resolution requesting the president to proclaim the week of March 7, 1982, as Women's History Week. In 1987, Congress designated March as Women's History Month to recognize how "American women of every race, class and ethnic background" have played "a critical economic, cultural and social role in every sphere of our Nation's life." Each year since, the president has issued a special proclamation to honor the lives and achievements of American women.

Women's Impact in Science

In science and technology, women have been unsung heroes. Women were leaders in building the early foundation of modern computer programming, discovery of radioactive particles and unveiling the structure of DNA.

At Johns Hopkins Medicine



+(Fiscal Year 2017)

Women's Impact at Johns Hopkins

Johns Hopkins has been a pioneer in promoting women's health and education in the medical fields.

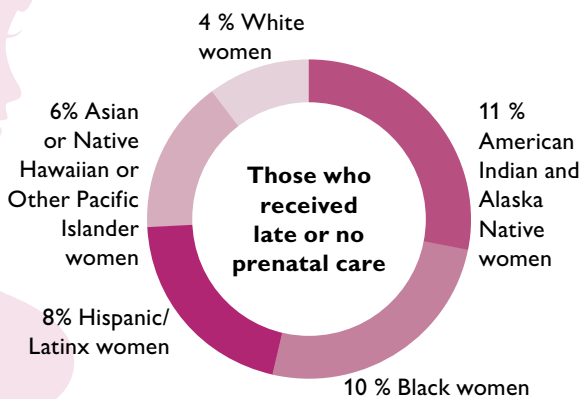
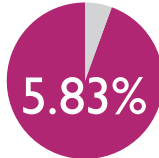
- 1889** — One of the first schools to offer nursing training, **the Johns Hopkins School of Nursing was founded concurrently with The Johns Hopkins Hospital.** Early leaders of the school went on to found the organization that became the National League for Nursing, and they helped establish the American Nurses Association
- 1890** — **Five Baltimore women**—Martha Carey Thomas, Mary Elizabeth Garrett, Mary Gwinn, Elizabeth King and Julia Rogers—**formed the Women's Fund Committee to raise money to open the school of medicine,** with the condition that women must be admitted
- 1893** — **When the school opened, three of the 18 students in the first class were women.** Though coeducational undergraduate education would not start until 1970, women have played key roles as faculty members and graduate students at Johns Hopkins
- 1917** — Florence R. Sabin was appointed **the first woman professor** at the school of medicine
- 1918** — The school of hygiene and public health opened, and **women made up one-third of the faculty**
- 1994** — **53 percent of the school of medicine's incoming class was women,** outnumbering men for the first time
- 2016** — Redonda G. Miller becomes the **first woman president** of The Johns Hopkins Hospital
- 2020** — Namandje Bumpus becomes the **first African American woman department chair** in the Johns Hopkins University School of Medicine and only African American woman chairing a pharmacology department at a medical school in the United States.

National Women's History Month

Health Disparities

REPRODUCTIVE AND MATERNAL HEALTH

FERTILITY RATE:
5.83 births per 1,000
women aged 15-44



MATERNAL MORTALITY:

Black/African American and American Indian/Alaska Native women are **2-3 times more likely to die** from pregnancy-related causes and experience severe maternal morbidity and mortality than women of other racial and ethnic groups



INFANT MORTALITY:

Mortality rates for Black/African American, Native Hawaiian or Other Pacific Islander, and American Indian/Alaska Native women are **more than double, double, and almost double that of white women**, respectively



SEXUAL AND GENDER MINORITY WOMEN: LESBIAN, BISEXUAL AND TRANSGENDER WOMEN

Lesbian women are **less likely to get preventive services** for cancer

Lesbian and bisexual women are **more likely to be overweight or obese**

Bisexual women are **at greater risk** of rape, physical violence, and stalking than lesbian and heterosexual women

Sexual and gender minority female youth have a heightened risk for a spectrum of mental health issues due to a lack of acceptance, harassment and discrimination

HEALTH CONDITIONS IN WOMEN

1 in 13 women will develop cervical cancer



1 in 10 have diabetes in the U.S.



1 in 8 women will develop breast cancer



Nearly 1 in 4 women report anxiety or an anxiety-related disorder

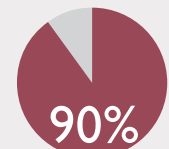


2x

as likely to report a major depressive episode compared to men



44 MILLION women are affected by cardiovascular disease in the U.S.



women have one or more risk factors for heart disease or stroke

1 out of 4 deaths of women results from cardiovascular diseases or stroke

WOMEN, CAREGIVING AND COVID-19

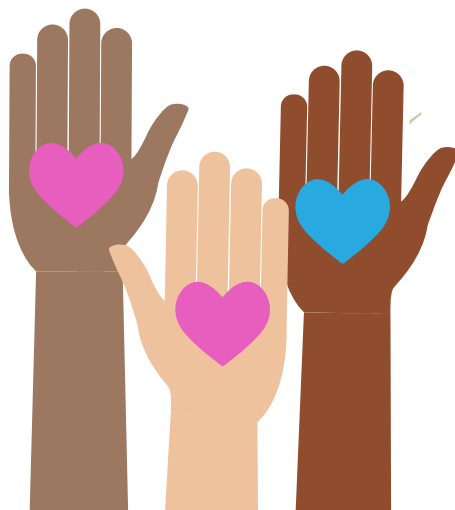
2 out of 3 caregivers in the United States are women, meaning they provide daily or regular support to children, adults, or people with chronic illnesses or disabilities.

Women who are caregivers have a greater risk for poor physical and mental health, including depression and anxiety. The COVID-19 pandemic can add even more stressors to caregiving. As a caregiver, taking care of yourself and getting the help you need are important. Taking care includes maintaining healthy behaviors, managing stress, and seeking extra support, especially during COVID-19.

Johns Hopkins Medicine Resources to Assist with Caregiving During COVID-19:

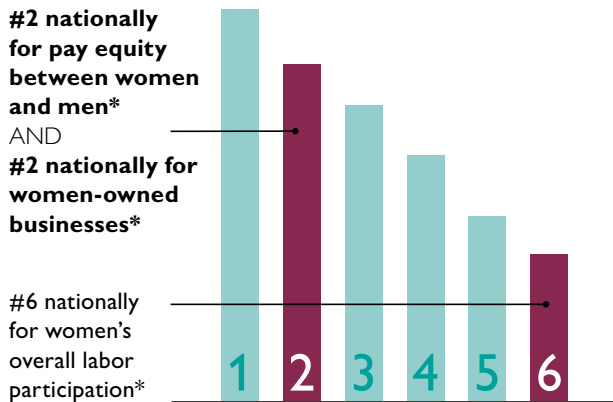
[Called to Care: A Program for Family Caregiver](#)

[Office of Well-Being: Parenting and Caregiving during COVID-19](#)



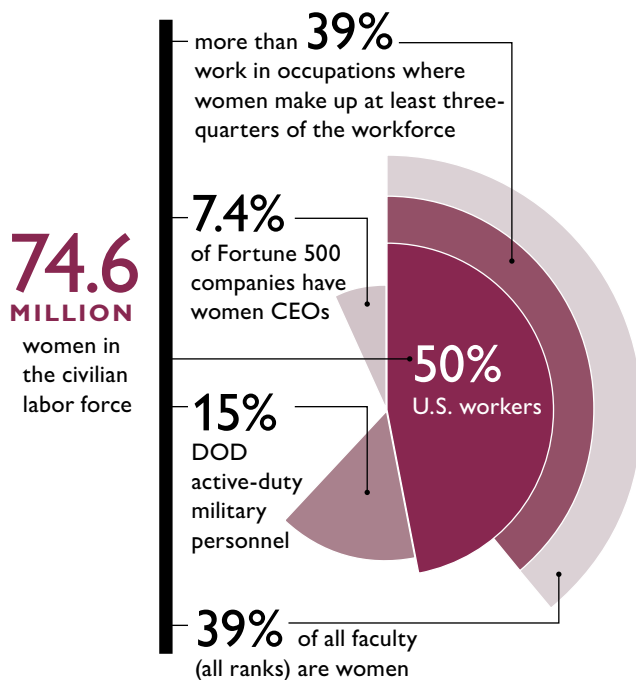
National Women's History Month

The Status of Women in Maryland



*(2015) | #(2017) | +(Fiscal Year 2017)

Women in the Workforce



Women own close to **10 MILLION** businesses, accounting for \$1.4 trillion in receipts

The gender gap in pay has narrowed since 1980, particularly among younger workers, but it still persists. In 2020, women earned 81% of what men earned, both full- and part-time U.S. workers

Resources

Women's History Month

womenshistorymonth.gov/

National Women's History Museum

womenshistory.org/

National Women's History Alliance

nationalwomenshistoryalliance.org/

National Women's Law Center

nwlc.org/about/

Johns Hopkins Resources

Johns Hopkins Medicine Women in Leadership

hopkinsmedicine.org/about/women-in-leadership/

Johns Hopkins Office of Women in Science and Medicine

hopkinsmedicine.org/women_science_medicine/

The Women of Hopkins

womenofhopkins.com/

Hopkins Women Faculty Forum

womenfacultyforum.wordpress.com/

The Woman's Club of Johns Hopkins University

web.jhu.edu/jhuwomansclub

Women of Hopkins Affinity Group

alumni.jhu.edu/affinitygroups/womenofhopkins

The Academy for Women and Leadership

carey.jhu.edu/programs/executive-education/programs-individuals/academies/women-and-leadership

Women of Whiting

wow.students.jh.edu/