

Information for patients and nurses

Rocket IPC Pleural Catheter



Rocket Indwelling Pleural Catheter (IPC)

Contents

Contact Information.....	03
What's in the Rocket Dressing Pack and Bottle Kit?.....	04-05
What is a Rocket Indwelling Pleural Catheter?.....	06
Using Your Rocket Indwelling Pleural Catheter Dressing Pack & Bottle	07-11
Finishing the Drainage Procedure	12
How to Place a New Dressing	13-14
Information for District Nurses	15
Discharge Home: what you need to do now	16
Drainage Diary	17-21
Frequently Asked Questions	22-23

02

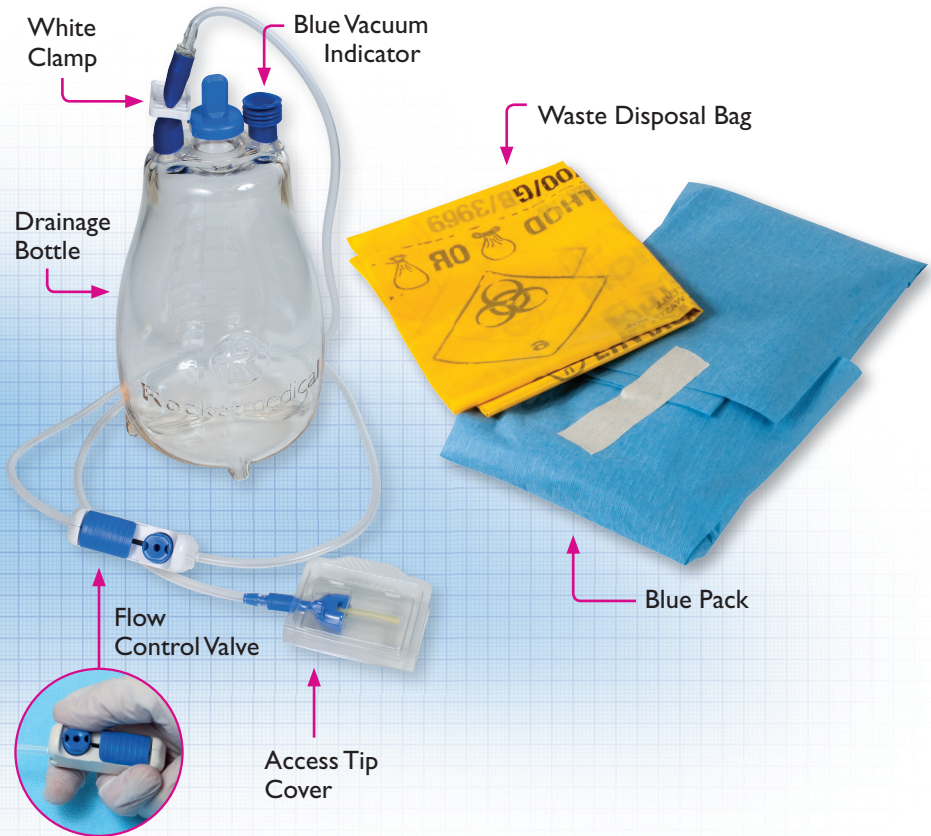
Please keep this information booklet with you and present it to your District Nurse when they visit or to the medical staff if admitted to hospital.

Contact Information**Hospital Sticker:****Date of Catheter Placement:****Date of Suture Removal:****District Nurse based at:****Contact Number:****Contact Name:****GP:****Contact Number:****Hospital Ward:****Contact Number:****Contact Name:**

Please keep this information booklet with you and present it to your District Nurse when they visit or to the medical staff if admitted to hospital.

03

What's in the Rocket Dressing Pack and Bottle Kit?



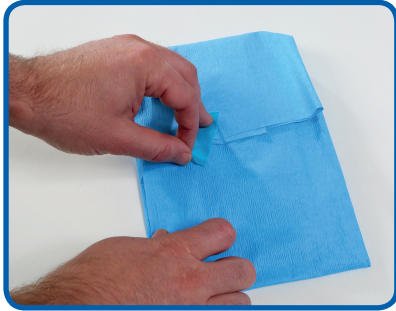
The Drainage Kit & Procedure Pack contains a Drainage Bottle & Dressing Pack.

The Procedure Pack contains a Dressing Pack and Waste Disposal Bag.

04

Please keep this information booklet with you and present it to your District Nurse when they visit or to the medical staff if admitted to hospital.

What's in the Rocket Dressing Pack and Bottle Kit?



When you open the Dressing Pack it will contain the following:



Please keep this information booklet with you and present it to your District Nurse when they visit or to the medical staff if admitted to hospital.

05

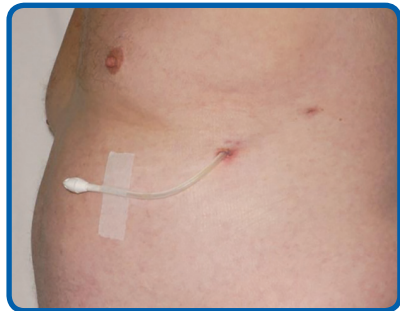
What is a Rocket Indwelling Pleural Catheter?

The Rocket Indwelling Pleural Catheter or IPC is a soft tube or 'drain' that your doctor has recommended for the removal of fluid from your chest. This fluid is one of the causes of your increasing discomfort such as shortness of breath or pain. This tube means that when a build up of fluid occurs in the chest and you experience discomfort, the fluid can be removed quickly and easily using the pre-vacuumed bottles by yourself, your carer or your District Nurse.

Before you return home a nurse will teach you how to connect a bottle up to the tube in your chest so that you can remove the fluid.

After the bottle has been used and the fluid is removed from your chest, the collection device is disconnected and disposed of. Your District Nurse will tell you how to do this.

The catheter is then covered with a clean flat dressing so that it is not visible under your clothing.



Your treatment should not interfere with any of your normal activities and if the catheter is covered properly you will also be able to shower and bathe as usual.

A District Nurse will be in contact to provide advice and drainage bottles, and if required your District Nurse will drain the fluid for you as well.

This booklet contains information on how to connect your catheter to the bottle and drain the fluid. There is also a chart to complete for the volumes drained.

If you see anything around your wound or drain that you think is not normal such as redness, swelling or fluid. Complete the procedure, cover the wound with a dressing and contact your doctor or nurse.

06

Please keep this information booklet with you and present it to your District Nurse when they visit or to the medical staff if admitted to hospital.

Using Your Rocket Indwelling Pleural Catheter Dressing Pack & Bottle

Important!

- You should have already received training on the correct drainage procedure, if not please contact your doctor or nurse. However, as a reminder we have provided these step by step instructions that should be clear and easy to follow.
- Drain only as directed by your doctor.

Before You Begin

1. You will need a clean, clear workspace, ideally a table or bench top.
2. Open your Rocket IPC Drainage Kit containing: 1 x Bottle and Drain Dressing Kit. Remove the Procedure Pack from the kit and place on your clean workspace. Leave the Bottle in the bag.
3. **Thoroughly wash your hands with soapy water for at least 1 minute before you begin.**
4. Open your Procedure Pack by peeling the pouch apart. Inside you will find a blue pack and waste disposal bag.
5. Remove the waste disposal bag and place it nearby so that waste can be easily put into it, but so that it is not on the clean area.
6. Remove your dressing from over your catheter. If you see anything that you think is not normal such as redness, swelling or fluid around your catheter, complete the drainage, cover the wound with a dressing and then contact your doctor or nurse. Put the dressing you have just removed into the waste disposal bag.
7. **Thoroughly wash your hands again with soapy water for at least 1 minute before you begin.**
8. Position the blue pack on your clean, clear workspace with the tape facing upwards.
9. Carefully remove the tape and unfold the blue wrapping using only the edges or the corners. Making sure that the contents remain in the middle of the wrapping.



Please keep this information booklet with you and present it to your District Nurse when they visit or to the medical staff if admitted to hospital.

07

Using Your Rocket Indwelling Pleural Catheter Dressing Pack & Bottle



Important: This blue sheet is your sterile area. The items on this wrap are sterile and will remain sterile unless they come into contact with un-gloved hands or other items that are non-sterile.

Setting Up

10. Remove your Drainage Bottle from the pack.

Important: It is important that the access tip cover remains in place. If the cover has fallen off in the pack make sure that you do not touch the tip with your un-gloved hands or any other non-sterile objects.



11. Remove the tape securing the tubing, and place the bottle on the edge of the blue wrap and place the access tip onto the wrapping next to the rest of your sterile items.

12. The white slide clamp on the top of your vacuum bottle is there to prevent a loss of vacuum in the bottle. The bottle contains a vacuum when it is supplied to you.

The bottle contains a vacuum when it is supplied to you. The blue indicator should look like this. This indicates the bottle has a vacuum.



If the indicator has expanded like this, then the vacuum in the bottle has been lost.



Important: If you find that the vacuum in the bottle has been lost and the indicator is in the expanded position, please put this to one side and use a new bottle.

08

Please keep this information booklet with you and present it to your District Nurse when they visit or to the medical staff if admitted to hospital.

Using Your Rocket Indwelling Pleural Catheter Dressing Pack & Bottle

Setting Up - continued

13. You now need to put on your gloves.

It is important that your gloves remain sterile so pick up one glove by the wrist and place it on your other hand (both gloves fit either hand).

14. There are 4 alcohol wipes (in pouches), tear these open but do not remove the contents. Place these on the blue wrap but position them away from the rest of the items.



Important: It is especially important that your gloves remain sterile, therefore be careful not to let the outside of the gloves touch anything that is non-sterile – your clothing, skin or anything that is not inside of the area of the blue wrap.

15. Peel open the pouch containing the valve cap and carefully let the cap drop into the middle of the blue wrapping.
16. Peel open the pouch containing the clear dressing wound dressing and place dressing on the blue sterile field.



Connecting the bottle to your Catheter

1. Remove the access tip cover and place the tip back on the blue wrap.

Important: Keep this connection clean and away from other objects to avoid contamination.

Warning: Do not attempt to connect the catheter to any other drainage bottle and drainage line. Use ONLY those drainage bottles supplied by Rocket Medical plc.



Please keep this information booklet with you and present it to your District Nurse when they visit or to the medical staff if admitted to hospital.

09

Using Your Rocket Indwelling Pleural Catheter Dressing Pack & Bottle

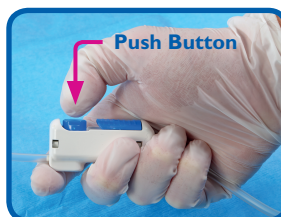
Setting Up - continued

2. Remove the catheter cap by gently rotating anti-clockwise and pulling gently - discard into the waste disposal bag.
3. Using a new alcohol wipe, gently clean around the outside of the catheter valve. Put the used alcohol wipe in the waste disposal bag.
4. Pick up the drainage line of the bottle and gently insert the access tip into the valve. You will feel a little resistance while you do this, which is normal.
5. Lock the two together by lining them up as shown and rotating clockwise. You will hear a click.



How to Drain Fluid

1. Hold the bottle and slide the white clamp to its open position. The bottle is now ready to use.
2. The Rocket IPC Drainage Bottle has a unique Flow Control Valve, this means you are able to control the rate of flow of fluid from your chest into the bottle. Press the Push Button gently to begin flow into the bottle. If you experience little or no discomfort, increase the pressure on the button to give full flow. To hold the valve fully open, push the slider forward over the button.



10

Please keep this information booklet with you and present it to your District Nurse when they visit or to the medical staff if admitted to hospital.

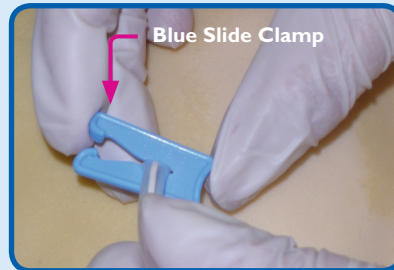
Using Your Rocket Indwelling Pleural Catheter Dressing Pack & Bottle

Important:

1. During the drainage procedure it can be quite normal to feel some discomfort. If you do feel pain while draining you can slow down the flow by releasing the button slightly until you feel comfortable, you can also stop the flow altogether by releasing the button fully. If you feel pain after doing this or severe pain, **contact your nurse or doctor.**
2. **Do not drain more than 1000ml, which is 1 large bottle or 2 small bottles of fluid** from your chest at any one time.
3. Do not use sharp objects near the Rocket IPC Catheter.

If you accidentally cut or pierce your catheter, use the blue slide clamp and immediately clamp off your catheter by following the steps below:

- a) Position your fingers between your body and the cut - pinch the catheter closed.
- b) Take the small slide clamp and slip it over the catheter then push the catheter into the narrowed end of the clamp. Doing this will close off the catheter and prevent air getting in or fluid escaping.
- c) **Contact your Discharging Ward immediately.**

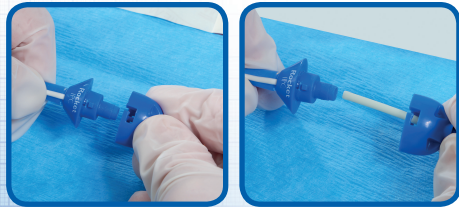


Please keep this information booklet with you and present it to your District Nurse when they visit or to the medical staff if admitted to hospital.

Finishing the Drainage Procedure

1. When the fluid has finished draining into the bottle, or there is too much discomfort to continue, stop the vacuum by releasing the push button. If you have used the slider, push backwards to release the push button.

2. Take the drainage line in one hand and the catheter valve in the other. Rotate the drainage line anti clockwise and slowly pull the access tip out of the valve in a smooth motion. Put the drainage line from the bottle down.



3. Use a **new alcohol wipe** to gently clean around the outside of the valve.



4. Take the **new** catheter valve cap and rotate it clockwise until it clicks into position.



12

Please keep this information booklet with you and present it to your District Nurse when they visit or to the medical staff if admitted to hospital.

How to Place a New Dressing

1. Clean around the catheter exit site with a **new** alcohol wipe.



2. Place the foam catheter pad around catheter.



3. Open the clear dressing, with the backing material facing towards you. Peel this off, using the split in the centre of the backing.
4. Place approximately 3 pieces of gauze on top of each other in the centre of the sticky material. Ensure there is plenty of space around the gauze. This will make it easier for you to apply the clear dressing.



Please keep this information booklet with you and present it to your District Nurse when they visit or to the medical staff if admitted to hospital.

How to Place a New Dressing - Continued

5. Wind the catheter carefully into loops and place over the foam.
6. If you wish you may remove your gloves at this stage. Place the clear dressing centrally, sticky side down, covering the catheter with the gauze squares. Ensure the clear dressing overlaps the foam square on all sides. Press down firmly.
7. Hold one of the central coloured tabs on the dressing and pull the cover sheet away. Now smooth and press the edges of the dressing down, making sure that it is completely secure. Repeat for the other side.
8. Lastly, remove the end paper tabs with one hand whilst continuing to smooth the edges down with your free hand. Repeat for the other side.
9. The clear dressing provided is water resistant and if placed correctly will allow you wash, shower or bath as normal. However take care to ensure no water leaks on to the gauze or the dressing will need to be replaced.
10. Place all the waste in the waste disposal bag, secure the bag and dispose of as instructed by your district nurses.



Information for District Nurses

The Rocket IPC drain is an indwelling catheter designed to drain recurrent malignant effusion from the chest. The drain is used to prevent repeat admission into a hospital and improve or help maintain your client's quality of life.

The catheter has a one way valve which when operated will only let fluid out, and will not let air back into the chest.

It is designed for clients to use themselves. However on occasion they may need some or complete assistance to use the system.

Vacuum bottles are used to drain the chest, and it usually takes around 5 to 45 minutes. Between each drainage, the catheter is covered by a dressing and the client can continue with their usual activities of daily living.

Following discharge from hospital, your client may not necessarily require your assistance in the drainage procedure, however advice and support may be required, unless circumstances change.

This booklet contains all the information you require on how to use the drainage bottles and care for the catheter. There is also a drainage diary at the back of the booklet so that the drainage amounts can be monitored.

If you require any further information please contact Rocket Medical on **T:0191 419 6988**.

Description	Pack Size	Stock Code
Rocket IPC Dressing Pack & Bottle (Pleural) 500ml*	5	R54400
Rocket IPC Dressing Pack & Bottle (Pleural) 1000ml*	5	R54411
Rocket IPC Pre Evacuated Bottle 500ml*	5	R54410
Rocket IPC Pre Evacuated Bottle 1000ml*	5	R54411-00-00
Rocket IPC Valve Cap	10	R54410-00-CP
Rocket IPC Drainage Line	10	R54410-00-DL
Rocket IPC Replacement Valve	1	R54410-00-VV

** Available on prescription tariff Part IXA appliances.*

Indwelling Pleural catheter Systems: Rocket IPC Drainage Pack & Bottle.

Please prescribe bottles in multiples of 5.

Please keep this information booklet with you and present it to your District Nurse when they visit or to the medical staff if admitted to hospital.

15

Discharge Home: What you need to do now

1. Ensure Patient/ Community Nurse has undergone training and is confident using the Rocket IPC drain.

There is a presentation on how to use IPC at www.rocketmedical.com. Click SUPPORT at the top of the main page and then select IPC patient video.

2. Ensure Patient has enough Bottle Kits as required and has contact information to reorder them.

**Your patient will require a supply of bottles;
this can be done via prescription.**

All the equipment needed for the drainage procedure and subsequent re-dressing is provided in a single pack. There is an option of 2 bottle sizes 600ml or 1000ml:
500ml Product Code: **R54400 Rocket IPC Dressing Pack & Bottle**
1000ml Product Code: **R54411 Rocket IPC Dressing Pack & Bottle**

***The packs can be ordered on prescription, tariff Part IXA appliances:
- Indwelling Pleural Catheter Drainage Systems
- Rocket IPC Drainage Pack & Bottle.***

Please prescribe drainage pack and bottle in Multiples of 5.

These can be ordered from the patient's local pharmacy. If lead times are quoted at 8-10 days, ask the pharmacist to contact Rocket Medical directly.

Pharmacies can order direct from Rocket Medical on 0191 419 6988.

Delivery should be within 48hrs of receiving the order.

The bottles are for single use only. Drained fluid and used bottles should be disposed of in accordance with your local protocol for handling contaminated waste/substances.

3. Ensure Community Nurse has relevant instructions for use, for the Rocket IPC drain and contact details for Rocket Medical plc if advice or extra training is required.

If further clinical advice is required please contact the patient's discharging ward.

For further details and supplies of Rocket IPC Dressing Pack & Bottle Packs, please contact our Customer Services Team for assistance: 0191 419 6988 or contact our IPC Support Team on IPCSupport@rocketmedical.com.

16

Please keep this information booklet with you and present it to your District Nurse when they visit or to the medical staff if admitted to hospital.

Drainage Diary

Use the comments section to record the colour and consistency of the drained fluid. If a sample has been taken for testing, please ensure the date is recorded.

Date:	Time:	Volume:	Running Total Volume:
Comments:			
Date:	Time:	Volume:	Running Total Volume:
Comments:			
Date:	Time:	Volume:	Running Total Volume:
Comments:			
Date:	Time:	Volume:	Running Total Volume:
Comments:			

Please keep this information booklet with you and present it to your District Nurse when they visit or to the medical staff if admitted to hospital.

Drainage Diary

Date:	Time:	Volume:	Running Total Volume:
Comments:			
Date:	Time:	Volume:	Running Total Volume:
Comments:			
Date:	Time:	Volume:	Running Total Volume:
Comments:			
Date:	Time:	Volume:	Running Total Volume:
Comments:			
Date:	Time:	Volume:	Running Total Volume:
Comments:			

Drainage Diary

Date:	Time:	Volume:	Running Total Volume:
Comments:			
Date:	Time:	Volume:	Running Total Volume:
Comments:			
Date:	Time:	Volume:	Running Total Volume:
Comments:			
Date:	Time:	Volume:	Running Total Volume:
Comments:			
Date:	Time:	Volume:	Running Total Volume:
Comments:			

Please keep this information booklet with you and present it to your District Nurse when they visit or to the medical staff if admitted to hospital.

Drainage Diary

Date:	Time:	Volume:	Running Total Volume:
Comments:			
Date:	Time:	Volume:	Running Total Volume:
Comments:			
Date:	Time:	Volume:	Running Total Volume:
Comments:			
Date:	Time:	Volume:	Running Total Volume:
Comments:			
Date:	Time:	Volume:	Running Total Volume:
Comments:			

20

Please keep this information booklet with you and present it to your District Nurse when they visit or to the medical staff if admitted to hospital.

Drainage Diary

Date:	Time:	Volume:	Running Total Volume:
Comments:			
Date:	Time:	Volume:	Running Total Volume:
Comments:			
Date:	Time:	Volume:	Running Total Volume:
Comments:			
Date:	Time:	Volume:	Running Total Volume:
Comments:			
Date:	Time:	Volume:	Running Total Volume:
Comments:			

Please keep this information booklet with you and present it to your District Nurse when they visit or to the medical staff if admitted to hospital.

Frequently Asked Questions

1. How long will the catheter be in my chest?

The catheter will be in your chest until you have 2-4 weeks with minimal or no drainage. The amount of time will vary from patient to patient, but the catheter could remain in place for several months.

2. When will the sutures (stitches) be removed?

Your nurse should remove the top set after 5-7 days and the bottom set 12-14 days or when wounds have healed for suture removal to occur.

3. How often should I drain the fluid from my chest?

The doctors and nurses will tell you, but it is usually every one to two days initially.

After your first bottle, if you still feel breathless, you may need to drain a second bottle.

After a few weeks you may find that the fluid drained starts to become less, after consulting with your nurse/doctor you should be able to start reducing the frequency of the drainage so long as you no longer feel short of breath.

If you are able to keep your chest fairly free of fluid, you are less likely to feel short of breath. You will also be more likely to cause a situation that if the fluid stops from building up the catheter can be removed.

4. What if I still feel short of breath after I have finished draining?

You should not drain more than 1000ml from the chest per day. Notify your doctor if you continue to feel short of breath after 1000mls has been drained.

5. What do I do if I experience pain when draining?

During the drainage procedure it can be quite normal to feel some discomfort. If you do feel pain while draining you can slow down the flow by releasing the button slightly on the flow control unit until you feel comfortable, you can also stop the flow altogether by releasing the button fully. If you continuously feel severe pain after doing the procedure contact your nurse or doctor.

6. What does it mean if the volume of my drainage is smaller or I do not drain any fluid?

If you drained normally last time and the fluid suddenly stops during drainage then it may be possible that some debris may be blocking the line. Replace the bottle and repeat the drainage procedure.

If you drained normally last time and there is no drainage at all, it may be that your catheter is blocked. Contact your doctor so that the catheter can be checked.

If the amount you have drained has gradually declined then it could be that there may be no more fluid left. Contact your doctor so this can be checked.

Frequently Asked Questions - Continued

7. What should I do if the drainage fluid changes colour?

Make a note in the drainage diary in this booklet. Any change in the appearance of the fluid should be reported to your nurse or doctor.

8. Can I take a shower with a catheter in place?

Yes, if the self-adhesive dressing supplied in the procedure pack, is properly and securely attached to your skin.

The self-adhesive dressing is designed to keep fluid out. Be sure the dressing is completely and securely attached, smooth and wrinkle free, and that the catheter and gauze pads are all contained underneath it.

If the gauze becomes wet when showering, remove the dressing immediately, clean and dry the area and apply a new dressing as shown in this booklet.

A month after the insertion of the catheter if the catheter area has healed well and is clean and dry, it may not be necessary to have a dressing on at all, at this stage you can still shower and bathe without any dressings. Check with your nurse before you stop dressing the catheter area.

9. What happens if the IPC catheter falls or is pulled out?

The IPC catheter has a polyester cuff that is normally under the skin where the catheter is inserted. This cuff and the area where you will have had sutures in place where the catheter exits the body, helps keep the catheter in place.

In the very unlikely event that the catheter falls or is pulled out, cover the wound with a sterile dressing i.e. a large plaster and seek immediate medical attention.

10. What do I do if the valve should come away from the catheter?

Take the small blue slide clamp from the procedure pack and slip it over the catheter then push the catheter into the narrowed end of the clamp. Doing this will close off the catheter and prevent air getting in or fluid escaping.

Contact your discharging ward or doctor immediately.

11. What should I do if my drainage bottle does not appear to work?

Sometimes it may appear that the IPC drainage bottles have no vacuum. This is because the blue connector tube has not opened once the white clip has been moved.

The non-opening of the blue tube does not allow the vacuum contained in the bottle to be applied, therefore no fluid can be drained.

This can be easily overcome, with gentle manipulation of the tube forwards and backwards when the white clip has been opened.

When this is done, the bottle will then work as normal. If the bottle does not work please read advice given to Question 6.

Please keep this information booklet with you and present it to your District Nurse when they visit or to the medical staff if admitted to hospital.

23



 **Rocket**homecare



 **Rocket**medical

Rocket Medical plc.

Sedling Road
Washington.
Tyne & Wear
NE38 9BZ
England

Customer Services: 0191 419 6988

www.rocketmedical.com

Rocket® IPC Pleural Catheter Copyright© 2013 Rev13 (21/01/20) - R89937

With thanks to Glenfield Hospital.