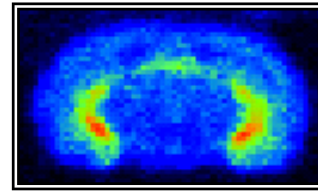
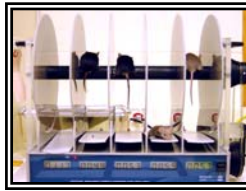
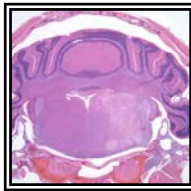




2008 Phenotyping Symposium III



The 2008 JHU Phenotyping Symposium will be February 19, 2008, (Tuesday after President's Day) in the Tilghman Auditorium with exhibits and posters in the Turner Concourse. **Registration is free but Required for admission.** The last 2 meetings (2006, 2007) had more than 200 participants from the US and Canada. In addition to the new and larger venue, scientific and technical posters are invited, and on Wednesday February 20, there will be a phenotyping pathology slide conference 9am –12 noon, and tours of the ICMIC SAIRP imaging facility, and NBC Neurobehavioral Core. **Reservations required for February 20 activities.** For the preliminary program, **FREE** on line registration, sponsorship, poster submission, exhibit, slide conference and tour information and reservations check <http://www.hopkinsmedicine.org/JHUphenotyping> (or Google: Hopkins phenotyping)

New Improved GEM Database

<http://www.hopkinsmedicine.org/JHUphenotyping/JHMIGEM/GEMhome.html> or follow links from the core home page (Google: Hopkins phenotyping)

Only 6 (six) questions are required in the simplified online submission form, for a GEM to be included. The site and information are for JH use to inform colleagues about Genetically Engineered (or spontaneous mutant) mice (GEM) in the JH community, to provide assistance with nomenclature, surveillance and husbandry information for publication, peer review and grant submission, and to facilitate access to testing and interdisciplinary collaboration.

2008 Phenotyping Course

The 2008 Phenotyping course (ME 680.712) runs from January 9– March 6, 2008; Wednesdays and Thursdays, 2:30-4pm. For schedule and syllabus for remaining lectures, including imaging, pulmonary, auditory, motor, ophthalmic phenotyping, check <http://www.hopkinsmedicine.org/mcp/PHENOCORE/08phenocourseME680712.html> or follow links from the core home page (Google: Hopkins phenotyping)

Slide Conferences

To be added to our mailing list, or if you have slides or a case that you would like to present, contact phenocore@jhmi.edu. For more information and recent cases go to <http://www.hopkinsmedicine.org/mcp/PHENOCORE/SlideConference.html> or follow links from the core home page (Google: Hopkins phenotyping)

The next slide conference will be February 20 in conjunction with the symposium.

Upcoming Events

<http://www.hopkinsmedicine.org/mcp/PHENOCORE/UPcoming.html>

Jan 30–Feb 1, 2008

Charles River 4th European Short course

February 19-20, 2008:

Johns Hopkins Phenotyping Symposium III