

Do You Have Knee Arthritis? Are You a Good Sleeper?

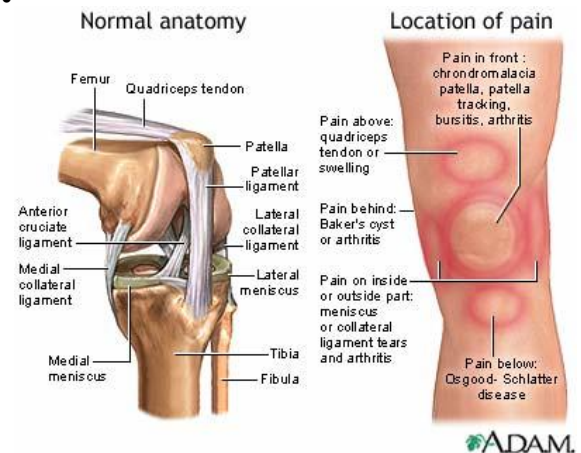
Researchers at the **Johns Hopkins School of Medicine** are looking for volunteers to participate in a research study examining the association between sleep and sensory abilities in Arthritis.

➤ **To participate in this study, you must be:**

- 50 Years of age and older **OR** have prior Knee Osteoarthritis diagnosis
- Have frequent knee pain
- Generally Healthy
- Be a Good Sleeper

➤ **This study involves:**

One Sleep study conducted in your home
Sensory testing and knee exam @ Johns Hopkins
Optional blood draw and physical tests
All examinations, parking, & tests are provided at no cost.



Compensation up to \$330.00

Approved August 16, 2010

CALL TODAY!

2009

410.550.7906



Michael T. Smith, Ph.D., Principal Investigator
Protocol: NA_00011802
Johns Hopkins University School of Medicine