

**The Johns Hopkins Hospital**  
**Sample Molecular Epidemiology Laboratory Report**

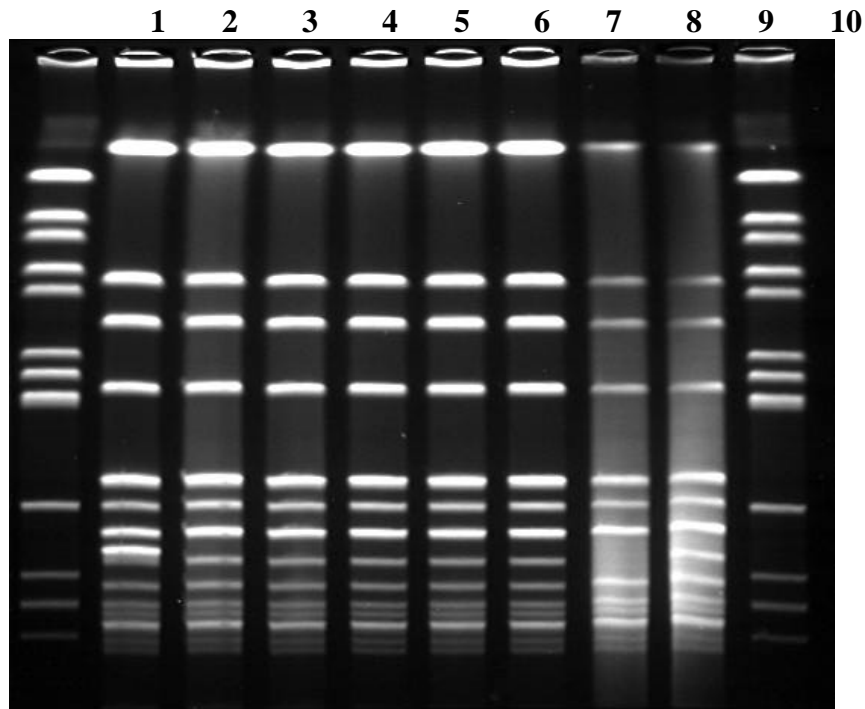
Date	5/27/99	Method	PFGE	% Agarose	1%
Location	ICU-A	Enzyme	<i>Sma</i> I	Buffer	.5X
Organism	MRSA	Pulse Time	5 to 40 sec	Tech Initials	sh
Gel No.	1	Run Time	24 hours	Reviewer Initials	wgm

**Description of Isolates:**

Lane	Name	Date	Specimen No.	Body Source	Comment
1	Molec. Wt. Marker				<i>E. faecalis</i> OGIRF
2	Patient 1	10/19/96		endotracheal	
3	Patient 2	6/20/97		nares	
4	Patient 3	6/20/97		nares	
5	Patient 4	5/27/97		blood	
6	Patient 5	6/20/97		nares	
7	Patient 6	6/17/97		blood	
8	HCW 1	6/26/97		nares	
9	HCW 2	6/30/97		nares	
10	Molec. Wt. Marker				<i>E. faecalis</i> OGIRF

**Epidemiologic Question:**

Is the MRSA from Patient 1, isolated 10/96 at Hospital A, related to a cluster of MRSA cases (Patients 2 to 6) from May and June of 1997? Two health care workers (HCW) were colonized with MRSA at the time the cluster was discovered. Are the isolates from HCW1 and HCW2 related to patient strains?



**Interpretation:**

MRSA isolated in 1997 from Patients 2,3,4,5, and 6 are indistinguishable. The MRSA from HCW2 has the same fingerprint pattern as the clustered patients. These six cases are the same strain type ICU-A. Patient 1 has a closely related isolate, subtype ICU-A1. HCW1 also has a strain closely related to the outbreak, ICU-A2.

