

THE SKIP VIRAGH  
OUTPATIENT  
CANCER BUILDING

THE SIDNEY KIMMEL COMPREHENSIVE CANCER CENTER AT JOHNS HOPKINS



**FAST FACTS**

- Cost \$100 million: Funded entirely by private support, including a \$65 million lead gift made possible by **Skip Viragh** and \$10 million from **Under Armour**, as well as additional giving by many generous donors
- 200 daily visits
- 60 to 80 new patient visits per week
- 10 floors and 184,000 square feet
- 38 exam rooms
- 38 infusion rooms
- 6 consultation rooms
- A café

**PATIENT SERVICES**

- Breast and Gynecologic Cancer Clinics:* 10th Floor
- Café:* 10th Floor
- Check-In (new patients):* Ground Floor
- Check-In Kiosks (returning patients):* Ground Floor and Main Floor
- Concierge:* Ground Floor and Main Floor
- Guest Computers:* 5th Floor
- Image Recovery Center:* Ground Floor
- Imaging/Radiology:* 4th Floor
- Infusion:* 6th Floor
- Medical Oncology Clinics:* 5th Floor
- Meditation Room:* Main Floor
- New Patient Visits/Multi-Disciplinary Clinics:* 5th Floor
- Nipple Tattoo Room:* 10th Floor
- Patient and Family Services:* Main Floor
- Parking Prepayment Machines:* Main Floor
- Pharmacy:* Ground Floor
- Phlebotomy:* Ground Floor
- Physical Therapy:* 10th Floor
- Parking Garage Entrances:* Ground Floor and Main Floor
- Under Armour Breast Health Innovation Center:* 10th Floor
- Vending Machine:* Ground Floor and 5th Floor
- Welcome Center:* Ground Floor



THE SKIP VIRAGH  
OUTPATIENT  
CANCER BUILDING

THE SIDNEY KIMMEL COMPREHENSIVE CANCER CENTER AT JOHNS HOPKINS

## FROM THE DIRECTOR

Welcome to the Skip Viragh Outpatient Cancer Building. This new outpatient cancer clinic represents the future of cancer medicine, a clinical enterprise that is second to none and the culmination of more than five years of planning. Here we will see more than 200 patients each day in a system that honors the spirit, dedication and vision of Skip Viragh, who sought to ensure that all cancer patients had access to the best of care. With an increasing amount of cancer care provided in the outpatient setting, and expected to grow over the next decade, this building is the new hub of our cancer services and clinical research.

The Skip Viragh Outpatient Cancer Building is the embodiment of team science and precision medicine. Clinicians and researchers are working side by side to remove all barriers to attacking cancer and bringing the very best treatment plan and supportive care to each patient. The following pages will provide a snapshot of our comprehensive range of outpatient services.

This building represents what the future of cancer care will look like. Here, in our Skip Viragh Outpatient Cancer Building, I believe we will see the beginning of the end of cancer.

Sincerely,



**William G. Nelson, M.D., Ph.D.**

Marion I. Knott Professor and Director  
The Sidney Kimmel Comprehensive  
Cancer Center at Johns Hopkins



## SKIP VIRAGH

*Always Thinking of Others*



**SKIP VIRAGH** made a difference in many people's lives. His brothers and sisters recall that he was always thinking of others. This was true in his professional endeavors and in his own personal battle with pancreatic cancer. His diagnosis with pancreatic cancer in 2002, only strengthened his desire to help others, his sister Katherine remembers.

He and his family set out to find a place that provided the best and most innovative therapies—a place that was rich in research but dedicated to providing stellar care with compassion and attention paid to all patient needs. This place was the Johns Hopkins Kimmel Cancer Center and the world-renowned pancreatic cancer treatment and research program led by Drs. **Elizabeth Jaffee** and **Daniel Laheru**.

dollar business. Before his death, he ensured his purpose to help others continued, using his wealth to take on human causes, supporting medical research and education and combatting societal ills, such as poverty and domestic violence.

He set aside money to make sure advances in pancreatic cancer research and treatment continued at the Johns Hopkins Kimmel Cancer Center, funding research and later the **Skip Viragh Center for Pancreas Cancer Clinical Research and Patient Care**. In the 14 years since Skip Viragh's death, the Skip Viragh Center has become a powerhouse in the development of new treatments for pancreatic cancer.

The Skip Viragh Outpatient Cancer Building fulfills his complete vision for cancer care, creating a single

**“SKIP VIRAGH IS THE HEART OF THIS BUILDING. IT IS THE REALIZATION OF HIS VISION AND THE VIRAGH FAMILY'S SINGULAR FOCUS TO BRING THE BEST CANCER CARE TO PATIENTS, AND THROUGH THEIR COMPASSION AND GENEROSITY, THEY WILL HELP COUNTLESS NUMBERS OF PEOPLE.”**

*—Daniel Laheru, M.D., Skip Viragh's doctor and co-director of the Skip Viragh Center for Pancreas Cancer Clinical Research and Patient Care.*

When he realized that even the best doctors and the best therapies could not save his life, he participated in a clinical trial—the very first immunotherapy trial for pancreatic cancer. He told his family, “I know this probably won't help me, but what they learn is going to help other people in the future.”

His concern for others was similarly ingrained in his work. He built a company—from the ground up—that brought institutional-style portfolio management to individual investors and grew it into a multi-billion-

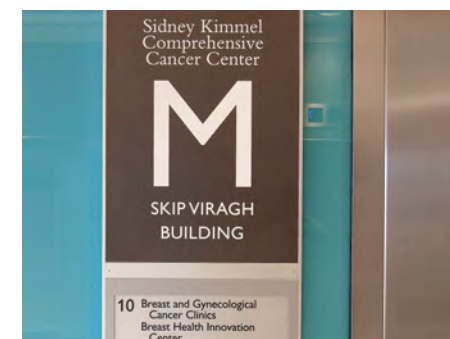
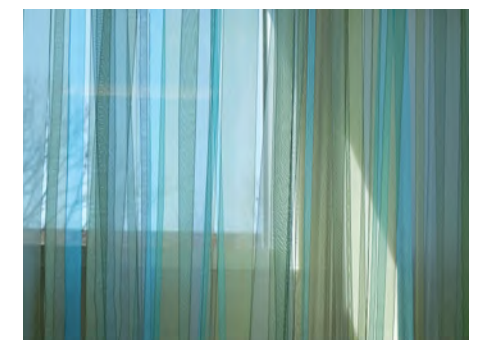
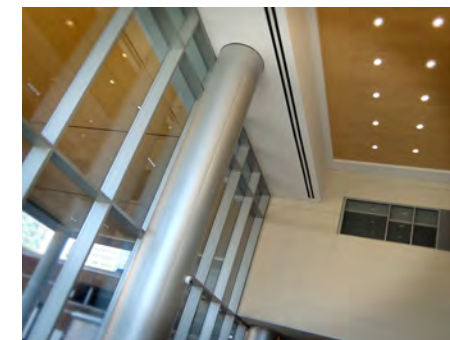
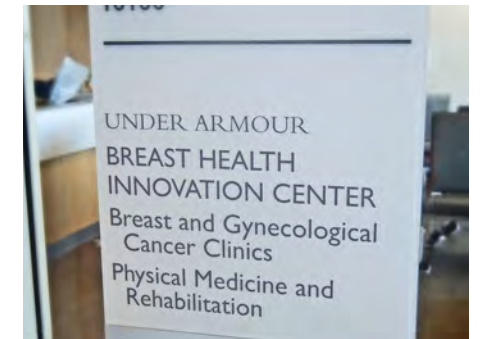
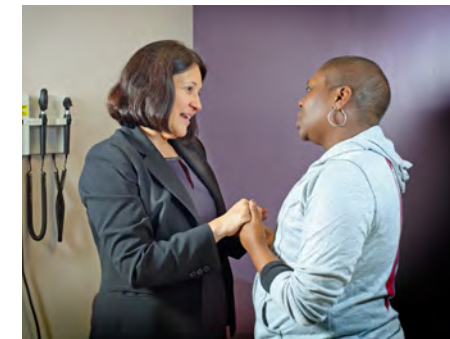
place for patients to receive stellar clinical treatment of cancer but also a full complement of supportive care, such as nutrition guidance, pain management and spiritual and emotional care.

Through Skip Viragh's genius, courage and generosity, we are set to transform cancer care. His legacy will live on through the many patients he has helped and the countless others who will receive unrivaled diagnostics, treatment and supportive cancer care when they walk through the doors of the Skip Viragh Outpatient Cancer Building.

INSIDE THE SKIP VIRAGH  
OUTPATIENT CANCER BUILDING

“SKIP WOULD SAY,  
‘IT’S NOT ABOUT THE  
BUILDING, IT’S ABOUT  
WHAT GOES ON INSIDE  
THE BUILDING.’”

—KATHERINE VIRAGH,  
SISTER OF SKIP VIRAGH



SKIP VIRAGH ENVISIONED A CANCER OUTPATIENT BUILDING WHERE  
TOP-NOTCH CANCER CARE WAS DELIVERED IN ONE PLACE,  
SPARING CLINICIANS AND PATIENTS ALIKE THE INCONVENIENCE,  
CONFUSION AND ADDED STRESS OF MOVING AMONG DIFFERENT  
BUILDINGS. THE EXPERIENCE HE IMAGINED IS NOW A REALITY.  
**AND IT BEGINS HERE.**

# THE SKIP VIRAGH OUTPATIENT CANCER BUILDING

## ENTRANCES, DROP OFF AND PARKING GARAGE

Convenience begins on arrival with patient drop-off at street level and easy access to the parking garage and reserved parking spaces. Another entrance on the 4th Floor of the Orleans Street Parking Garage connects to the main level of the Skip Viragh Outpatient Cancer Building.

## GROUND FLOOR

### PATIENT WELCOME CENTER

The welcome center oversees new patient check-in and registration to get patients started on their visit. Financial counselors are also available to advise patients who have financial concerns related to their cancer diagnosis. Three self-check-in kiosks for returning patients are also available. A patient locating system—the only one of its kind at Johns Hopkins—is activated at check-in and helps streamline each stop during the visit, decreasing wait times for patients.

### STATE-OF-THE-ART WIFI CAPABILITIES AND MOBILE DEVICE CHARGING STATIONS

Assure patients and their families stay connected.

### PHLEBOTOMY

Blood draws for specific blood tests for all patients (including patients involved in clinical trials) and IV placement are done here.

### IMAGE RECOVERY CENTER

Headwear, skin and nail care products, cosmetics, chemo care gift sets, compression stockings, arm sleeves, scarves, wigs, essential oils, relaxation CDs, and an assortment of post-breast surgery products are available. Full consultations and other services, including skin care and makeup lessons and hair care, can be scheduled at the Image Recovery Center's main location in the Weinberg Building.

### RETAIL PHARMACY

Our licensed pharmacists are part of our cancer care team. They offer consultations on each prescription dispensed. Our pharmacy also sells over-the-counter medications and supplies.

### VENDING

Vending machines dispensing healthy drinks and snacks are located here and on the 5th floor.

## MAIN FLOOR

### CHECK-IN KIOSKS

Three self-check-in kiosks for returning patients are available. New patients are checked in at the Welcome Center located on the ground floor.

### HARRY J. DUFFEY FAMILY PATIENT AND FAMILY SERVICES

This service provides professional counseling to our patients, families and caregivers with psychological, emotional, and spiritual needs. Our social workers support day-to-day coping with a cancer diagnosis and treatment; assistance with housing, transportation, community cancer resources, financial and legal matters; care management and caregiving; and survivorship. The Living with Cancer Resource Program offers patients, families and caregivers a variety of support groups, educational workshops and programs designed to teach patients and their families how to cope with the effects of cancer. Our chaplains provide pastoral and spiritual care in a nondenominational setting.

### THE SERAPH FOUNDATION MEDITATION ROOM AND CHAPLAINCY SUITE

This space provides a quiet place for private prayer and meditation.

## 4TH FLOOR

### IMAGING

Radiology services, including CT, MRI, ultrasound and X-ray are provided. The forward-thinking design of the building includes a removable wall to allow equipment to be removed and replaced when it becomes outdated, ensuring that the Skip Viragh Outpatient Cancer Building remains on the forefront of cancer treatment.

## 5TH FLOOR

### MULTI-DISCIPLINARY AND MEDICAL ONCOLOGY CLINICS

Our Multi-Disciplinary Clinics offer newly diagnosed cancer patients a comprehensive consultation involving all of the specialists contributing to the treatment and diagnosis of their cancer type, resulting in a detailed treatment plan recommendation. Several of our solid tumor specialty clinics, along with the Skip Viragh Center for Pancreas Cancer Clinical Research and Patient Care, one of Johns Hopkins' first precision medicine centers of excellence, and the Harry J. Duffey Family Pain and Palliative Care Program, are located on this floor. The Medical Oncology Clinics for patients' follow-up appointments with their doctors and nurses are also located here. Clinic amenities include a Multi-Disciplinary Clinical Conference Room that can accommodate up to 40 experts, plus 30 exam rooms and three consultation rooms. A comfortable respite area, vending machines and four guest computers are available to patients and families.

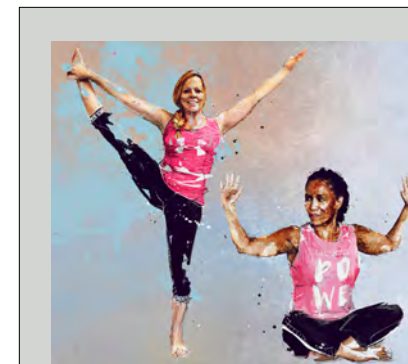
### NEW PATIENT DIAGNOSTIC AND TREATMENT PLANNING CENTER

A nurse practitioner assists patients with diagnostic testing to confirm a cancer diagnosis and quickly coordinate a Multi-Disciplinary Clinic appointment, if necessary.

## 6TH FLOOR

### TREATMENT

Here our specially trained nurses will administer chemotherapy, immunotherapy and clinical research therapies, known as clinical trials. Drug treatments are prepared in advance of patients' arrival, decreasing wait time. Patients can choose to get their treatment in one of 38 private treatment bays or in the company of other patients in a shared space called the Living Room. There is also a private waiting room for visitors and a private consultation room for meetings with members of the care team.



### COLLABORATIVE ARTWORK

More than 50 pieces of artwork, selected by a volunteer art committee, and the vibrant use of color throughout the Skip Viragh Outpatient Cancer Building create a welcoming and comforting space for patients and visitors. They are also used to help visitors navigate the building. Much of the artwork was donated. One of the signature pieces, *Transcendence of Cherry Blossoms*, located on the Ground Floor, was created by Tetsuo Matsumoto and donated by the National Arts Program. Athlete illustrations on the 10th Floor feature patients and were created by French graphic designer Florian Nicolle. Photography on the floor features Maryland's iconic Sagamore Farm as captured by Skyview Photos, an entrepreneurial group of Baltimore City students in collaboration with Crossroads School, Living Classrooms and Under Armour.

## 10TH FLOOR

### THE UNDER ARMOUR BREAST HEALTH INNOVATION CENTER

This unique center offers a complete experience for breast cancer patients and gynecologic cancer patients, bringing together the best clinical and supportive care in one location. It is home to the Breast and Gynecologic Cancer Multi-Disciplinary Clinic, where as many as 40 experts partner with patients to develop a treatment and supportive care plan. Working with Under Armour, we are able to integrate wellness with breast cancer care from diagnosis to after treatment. A cancer education room offers videos, print materials, seminars and healthy cooking tips by culinary experts.

### NIPPLE TATTOO ROOM

For patients undergoing mastectomy, a special service by tattoo artist Vinnie Myers, internationally recognized for realistic, 3D nipple tattoos that incorporate every anatomical detail, is available to patients to complete their breast reconstruction process.

### PHYSICAL MEDICINE AND REHABILITATION

Patients can consult with a rehabilitative medicine expert to receive a plan to help reduce the physical effects of treatment and engage in physical and occupational therapy in a window-filled space with panoramic skyline views of Baltimore.

### SKYLINE CAFÉ

A window-filled cafe offers panoramic views of the Baltimore skyline and serves a selection of smoothies, coffee, tea, juice and water, plus freshly made pastries, bagels, sandwiches, soups and salads. Prepackaged items are also available.

10TH FLOOR: WINDOW-FILLED SPACE WITH PANORAMIC SKYLINE VIEWS OF BALTIMORE.

